

# blood

2002 100: 627-634  
Prepublished online April 30, 2002;  
doi:10.1182/blood-2002-01-0098

## Targeting CB2 cannabinoid receptors as a novel therapy to treat malignant lymphoblastic disease

Robert J. McKallip, Catherine Lombard, Michael Fisher, Billy R. Martin, Seongho Ryu, Steven Grant, Prakash S. Nagarkatti and Mitzi Nagarkatti

---

Updated information and services can be found at:

<http://bloodjournal.hematologylibrary.org/content/100/2/627.full.html>

Articles on similar topics can be found in the following Blood collections

[Neoplasia](#) (4217 articles)

---

Information about reproducing this article in parts or in its entirety may be found online at:

[http://bloodjournal.hematologylibrary.org/site/misc/rights.xhtml#repub\\_requests](http://bloodjournal.hematologylibrary.org/site/misc/rights.xhtml#repub_requests)

Information about ordering reprints may be found online at:

<http://bloodjournal.hematologylibrary.org/site/misc/rights.xhtml#reprints>

Information about subscriptions and ASH membership may be found online at:

<http://bloodjournal.hematologylibrary.org/site/subscriptions/index.xhtml>

Blood (print ISSN 0006-4971, online ISSN 1528-0020), is published weekly by the American Society of Hematology, 2021 L St, NW, Suite 900, Washington DC 20036.

Copyright 2011 by The American Society of Hematology; all rights reserved.



# Targeting CB2 cannabinoid receptors as a novel therapy to treat malignant lymphoblastic disease

Robert J. McKallip, Catherine Lombard, Michael Fisher, Billy R. Martin, Seongho Ryu, Steven Grant, Prakash S. Nagarkatti, and Mitzi Nagarkatti

In the current study, we examined whether ligation of CB2 receptors would lead to induction of apoptosis in tumors of immune origin and whether CB2 agonist could be used to treat such cancers. Exposure of murine tumors EL-4, LSA, and P815 to delta-9-tetrahydrocannabinol (THC) in vitro led to a significant reduction in cell viability and an increase in apoptosis. Exposure of EL-4 tumor cells to the synthetic cannabinoid HU-210 and the endogenous cannabinoid anandamide led to significant induction of apoptosis, whereas exposure to WIN55212 was not effective. Treatment of EL-4 tumor-

bearing mice with THC in vivo led to a significant reduction in tumor load, increase in tumor-cell apoptosis, and increase in survival of tumor-bearing mice. Examination of a number of human leukemia and lymphoma cell lines, including Jurkat, Molt-4, and Sup-T1, revealed that they expressed CB2 receptors but not CB1. These human tumor cells were also susceptible to apoptosis induced by THC, HU-210, anandamide, and the CB2-selective agonist JWH-015. This effect was mediated at least in part through the CB2 receptors because pretreatment with the CB2 antagonist SR144528 partially re-

versed the THC-induced apoptosis. Culture of primary acute lymphoblastic leukemia cells with THC in vitro reduced cell viability and induced apoptosis. Together, the current data demonstrate that CB2 cannabinoid receptors expressed on malignancies of the immune system may serve as potential targets for the induction of apoptosis. Also, because CB2 agonists lack psychotropic effects, they may serve as novel anticancer agents to selectively target and kill tumors of immune origin. (Blood. 2002;100:627-634)

© 2002 by The American Society of Hematology

## Introduction

Marijuana is one of the oldest drugs of abuse, although its medicinal value has been known for several centuries. Delta-9-tetrahydrocannabinol (THC) is the major psychoactive component in marijuana.<sup>1</sup> THC and other synthetic cannabinoids have been used as potential therapeutic agents in alleviating such complications as intraocular pressure in glaucoma, cachexia, nausea, and pain.<sup>2</sup> Interest in the potential medicinal use of cannabinoids grew recently with the discovery of 2 cannabinoid receptors, CB1 and CB2.<sup>3,4</sup> CB1 receptors are expressed predominantly in the brain, whereas CB2 receptors are found primarily in the cells of the immune system.<sup>1,4</sup> Furthermore, endogenous ligands for these receptors capable of mimicking the pharmacologic actions of THC have also been discovered. Such ligands were designated endocannabinoids and include anandamide and 2-arachidonoyl glycerol.<sup>5-7</sup> The physiologic function of endocannabinoids and cannabinoid receptors remains unclear.

Recently, anandamide was shown to inhibit the proliferation of human breast cancer cell lines MCF-7 and EFM-19 in vitro.<sup>8</sup> Also, THC was shown to induce apoptosis in human prostate PC-3 cells and in C6 glioma cells in culture.<sup>9,10</sup> THC-induced apoptosis involved cannabinoid receptor-dependent<sup>8,11</sup> or -independent pathways.<sup>9,10</sup> Such studies have triggered interest in targeting cannabinoid receptors in vivo to induce apoptosis in transformed cells. To this end, cannabinoids were shown recently to inhibit the growth of C6 glioma cells in vivo.<sup>12,13</sup>

Cells of the immune system express high levels of CB2 receptors. It is not clear whether CB2 receptor ligation can induce apoptosis in normal or transformed immune cells. If CB2 receptor agonists can induce apoptosis in transformed immune cells, it could lead to development of a novel class of anticancer agents. In the current study, we investigated this possibility by using both murine and human leukemia and lymphoma lines as well as primary acute lymphoblastic leukemia (ALL) cells. We demonstrate that ligation of CB2 receptors can induce apoptosis in a wide range of cancers of immune-cell origin. Furthermore, we demonstrate that THC can inhibit the growth of murine lymphoma cells in vivo by inducing apoptosis and cure approximately 25% of the mice bearing the tumor. Together, the current data suggest that CB2 agonists that are devoid of psychotropic effects may constitute a novel and effective modality to treat malignancies of the immune system.

## Materials and methods

### Mice

Adult (6-8 weeks of age) female C57BL/6 mice were purchased from the National Institutes of Health, Bethesda, MD. The mice were housed in polyethylene cages and given rodent chow and water ad libitum. Mice were housed in rooms maintaining a temperature of  $74 \pm 2^\circ\text{F}$  and on a 12-hour light/dark cycle.

From the Departments of Microbiology and Immunology, Pharmacology and Toxicology, and Medicine, Medical College of Virginia, Virginia Commonwealth University, Richmond.

Submitted January 14, 2002; accepted March 12, 2002. Prepublished online as *Blood* First Edition Paper, April 30, 2002; DOI 10.1182/blood-2002-01-0098.

Supported in part by grants from the National Institutes of Health (DA 0114885 and ES 09098).

**Reprints:** Mitzi Nagarkatti, Department of Microbiology and Immunology, Medical College of Virginia, Virginia Commonwealth University, Richmond, VA 23298; e-mail: mnagark@hsc.vcu.edu.

The publication costs of this article were defrayed in part by page charge payment. Therefore, and solely to indicate this fact, this article is hereby marked "advertisement" in accordance with 18 U.S.C. section 1734.

© 2002 by The American Society of Hematology

## Reagents

THC was obtained from the National Institute of Drug Abuse (Rockville, MD) and was initially dissolved in dimethyl sulfoxide (DMSO; Sigma, St Louis, MO) to a concentration of 20 mM and stored at  $-20^{\circ}\text{C}$ . THC was further diluted with tissue culture medium for in vitro studies and phosphate-buffered saline (PBS) for in vivo studies. SR141716A and SR144528 were obtained from Sanofi Recherche (Montpellier, France). HU-210, anandamide, WIN55212, and JWH-015 were obtained from Tocris Cookson (Ellisville, MO).

## Cell lines

The murine lymphomas (EL-4 and LSA), the murine mastocytoma (P815), the murine melanoma (B16F10), Sup-T1, a T-lymphoblastic leukemia cell line developed from an 8-year-old male, Jurkat, an acute T-lymphoblastic leukemia cell line generated from a 14-year-old male, Molt-4, an acute T-lymphoblastic leukemia cell line established from a 19-year-old male, and human glioma U251 cell line were all maintained in RPMI 1640 medium (Gibco Laboratories, Grand Island, NY) supplemented with 5% fetal calf serum (FCS), 10 mM HEPES, 1 mM glutamine, 40  $\mu\text{g}/\text{mL}$  gentamicin sulfate, and 50  $\mu\text{M}$  2-mercaptoethanol. In assays examining the effect of cannabinoid agonists on tumor-cell viability and apoptosis, the concentration of FCS ranged from 0% to 5%.

## Primary leukemic cells

Peripheral blood samples were obtained from 2 patients diagnosed with ALL. The samples were referred to as ALL no. 1 and ALL no. 2. ALL no. 1 was obtained from a male patient newly diagnosed with common acute lymphoblastic leukemia antigen (CALLA) (CD10)-positive non-B, non-T ALL. ALL no. 2 was obtained from a female patient newly diagnosed with terminal deoxynucleotidyl transferase (TdT)-positive T-cell ALL. Informed consent was obtained following institutional guidelines and approval was obtained from the institutional review board of Virginia Commonwealth University. Consent was provided according to the Declaration of Helsinki. The content of the lymphoblasts was greater than 70% as determined by flow cytometric analysis. Mononuclear cells were isolated by Ficoll-Paque density gradient centrifugation. In this study, the samples were cryopreserved and stored in liquid nitrogen before use. Viability after thawing was determined by trypan blue dye exclusion and was greater than 90%.

## Measurement of the effect of cannabinoid receptor agonists on tumor-cell viability in vitro

Tumor cells were adjusted to  $1 \times 10^6$  cells/mL in medium containing 5% FCS or serum-free medium. The cells ( $1 \times 10^6$ ) were cultured in 24-well plates in 2 mL medium in the presence or absence of various concentrations of cannabinoid receptor agonists for 2 to 24 hours. Finally, the cells were harvested and washed twice in PBS, and the viable cell count was determined by trypan blue dye exclusion.

## Detection of cannabinoid-induced apoptosis in vitro

Tumor cells ( $1 \times 10^6$  cells/well) were cultured in 24-well plates in the presence or absence of various concentrations of THC or other cannabinoid receptor agonists for 2 to 24 hours, as described above. Next, the cells were harvested, washed twice in PBS, and analyzed for the induction of apoptosis using either the terminal deoxynucleotidyl transferase-mediated end labeling (TUNEL) method or annexin V/propidium iodide (PI) method, as described elsewhere.<sup>14,15</sup> To detect apoptosis using the TUNEL method, we washed the cells twice with PBS and fixed them with 4% p-formaldehyde for 30 minutes at room temperature. The cells were next washed with PBS, permeabilized on ice for 2 minutes, and incubated with fluorescein isothiocyanate-dUTP and TdT (Boehringer Mannheim, Indianapolis, IN) for 1 hour at  $37^{\circ}\text{C}$  and 5%  $\text{CO}_2$ . To detect apoptosis using the annexin V/PI method, we washed the cells twice with PBS and stained them with annexin V and PI for 20 minutes at room temperature. The cells were washed twice with PBS. The levels of

apoptosis in both the TUNEL and annexin/PI assays were determined by measuring the fluorescence of the cells by flow cytometric analysis. Five thousand cells were analyzed per sample.

## Measurement of tumor-cell viability and induction of apoptosis in vivo

Groups of 5 C57BL/6 mice were injected intraperitoneally (IP) with  $1 \times 10^6$  EL-4 tumor cells suspended in 0.2 mL PBS. The control mice received PBS alone. Ten days later, the mice were injected with various concentrations of THC (0, 1, 3, or 5 mg/kg IP). The mice were killed 24 hours later and the EL-4 tumor cells were harvested from the peritoneal cavity by injecting 5.0 mL PBS, followed by aspiration of the peritoneal fluid from the cavity. The contaminating red blood cells were removed with red blood lysing solution (Sigma), and the tumor cells were washed twice with PBS. The number of viable cells was determined by trypan blue dye exclusion, and apoptosis was determined using the TUNEL assay. The presence of tumor cells in the peritoneal cavity was confirmed by the ability of the cells to grow in vitro and by the phenotype (Thy1<sup>+</sup>, CD4<sup>-</sup>, CD8<sup>-</sup>).

## Effect of THC on survival of EL-4-challenged mice

Groups of 8 C57BL/6 mice were injected IP with  $1 \times 10^6$  EL-4 tumor cells in a volume of 100  $\mu\text{L}$  PBS. One day following tumor injection, the mice received daily IP injections for 14 days with 5 mg/kg THC in a volume of 500  $\mu\text{L}$  PBS. Control mice received injections with the vehicle control. The mice were observed daily for signs of morbidity and were euthanized. Mice that survived for more than 60 days were rechallenged with live EL-4 cells ( $1 \times 10^6$ ) and tested for their ability to reject tumor and survive.

## RNA isolation and reverse transcriptase-polymerase chain reaction (RT-PCR)

RNA was isolated from approximately  $1 \times 10^7$  cells using the RNeasy Mini Kit (Qiagen, Valencia, CA). Because CB1 and CB2 are encoded by single exons, a DNase digestion was included in the isolation procedure to limit the possibility of PCR amplification of CB1 and CB2 from genomic DNA. cDNA was prepared with the Qiagen OmniScript RT kit using 1  $\mu\text{g}$  RNA as template for first-strand synthesis. Mouse and human CB1 was amplified using primers H CB1 U (5'-CGTGGGCAGCCTGTTCCCTCA-3') and H CB1 L (5'-CATGCGGGCTTGGTCTGG-3'), which yield a product of 403 bp. Human CB2 was amplified using primers H CB2 U (5'-CGCCGGAAGCCCTCATACC-3') and H CB2 L (5'-CCTCATTCGGGCCATCTG-3'), which yield a product of 522 bp. Mouse CB2 was amplified using M CB2 U (5'-CCGAAAAGAGGATGGCAATGAAT-3') and M CB2 L (5'-CTGCTGAGCGCCCTGGAGAAC-3'), which yield a product of 479 bp.  $\beta$ -Actin was used as a positive control, with primers M BA U (5'-AAGGCCAACCCTGAAAAGATGACC-3') and M BA L (5'-ACC-GCTCGTTGCCAATAGTGATGA-3'), with a product size of 427 bp. PCR reactions were carried out using the following parameters:  $95^{\circ}\text{C}$  for 15 seconds,  $58^{\circ}\text{C}$  for 15 seconds, and  $72^{\circ}\text{C}$  for 30 seconds for 35 cycles; followed by a final 5 minutes at  $72^{\circ}\text{C}$  in an Applied Biosystems GeneAmp 9700 (Foster City, CA). The resulting PCR products were separated on a 1% agarose gel.

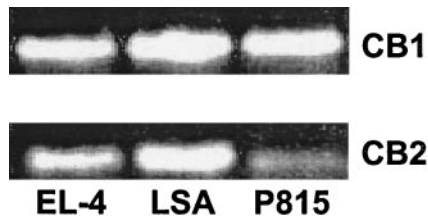
## Results

### Expression of CB1 and CB2 receptors in EL-4, LSA, and P815 murine tumor cells

The expression of CB1 and CB2 cannabinoid receptor mRNA was determined by RT-PCR (Figure 1). This analysis revealed that all 3 murine tumor-cell lines expressed both CB1 and CB2 mRNA.

### Exposure of EL-4, LSA, and P815 tumor cells to THC leads to a reduction in viability and induction of apoptosis in vitro

We examined whether THC exposure had an effect on the viability of EL-4, LSA, and P815 tumor cells in vitro. To this end, the tumor



**Figure 1.** The expression of CB1 and CB2 mRNA in EL-4, LSA, and P815 tumor cells. The expression of CB1 and CB2 mRNA was determined by RT-PCR analysis. Total RNA was isolated from EL-4, LSA, and P815 tumor cells. mRNA was reverse transcribed and amplified by PCR with primers specific for CB1 and CB2. A photograph of ethidium bromide–stained amplicons is depicted.

cells were cultured in medium containing 5% FCS and exposed to various concentrations of THC (0, 1, 10, and 20  $\mu\text{M}$ ) for 24 hours, and the viability was determined by trypan blue dye exclusion (Figure 2A). The results showed that exposure to THC at concentrations of 10  $\mu\text{M}$  or greater led to a significant reduction in the number of viable cells. Next, we analyzed the THC-treated tumor cells for induction of apoptosis by TUNEL staining (Figure 2B). The results demonstrated that THC induced significant apoptosis in all 3 cell lines in vitro. Together these results suggest that exposure of EL-4, LSA, and P815 tumor cells to THC in vitro led to significant cell killing by induction of apoptosis.

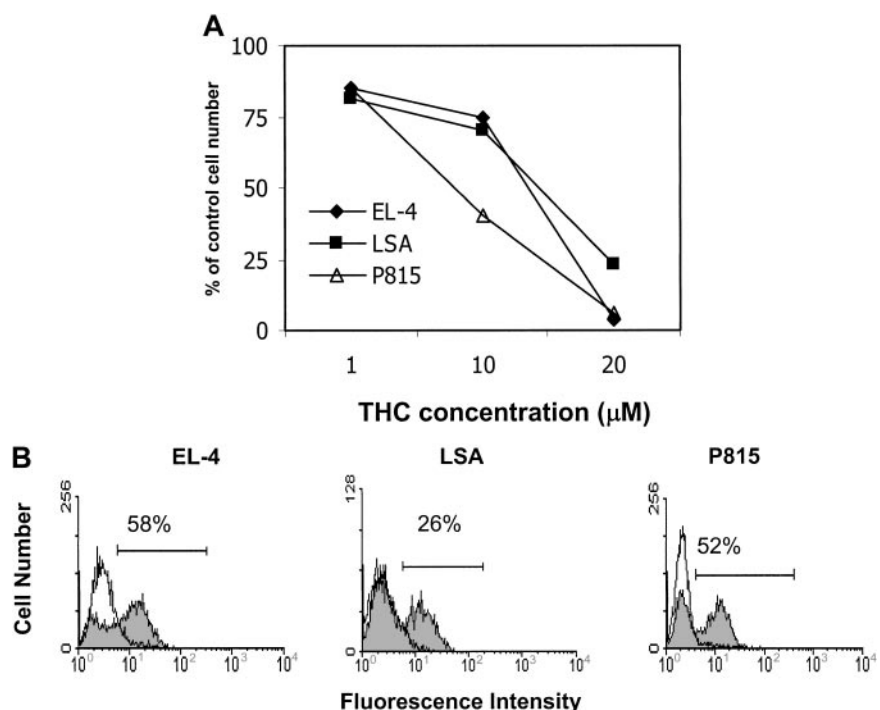
#### THC-induced effect on cellularity is dependent on exposure time and serum concentration

Previous studies suggested that the efficacy of THC may be directly related to the concentration in serum.<sup>16,17</sup> Therefore, we examined whether culturing tumor cells in serum-free medium would have an effect on THC-induced killing of tumor cells. This was accomplished by exposing EL-4 tumor cells to various concentrations of THC (1, 3, and 5  $\mu\text{M}$ ) or the vehicle for 4, 8, or 12 hours in serum-free medium and determining the cell viability. The results showed that by culturing the cells in serum-free medium, we

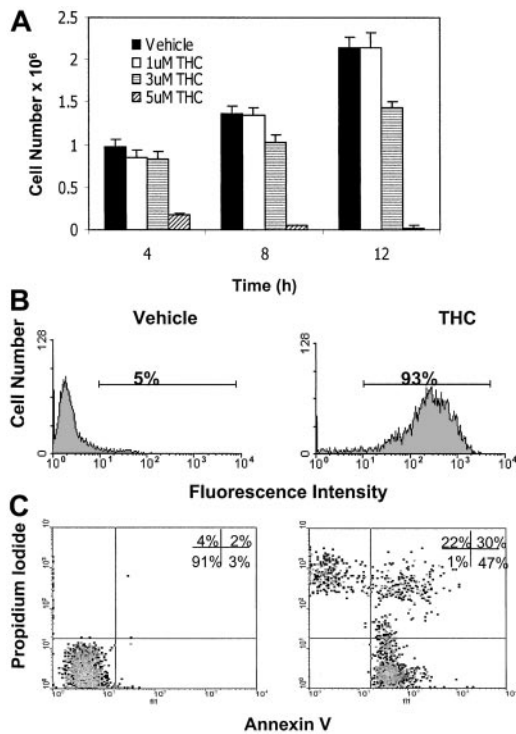
dramatically reduced the concentration of THC needed to decrease tumor-cell viability (Figure 3A). For example, exposure of EL-4 tumor cells to as low as 5  $\mu\text{M}$  THC for 4 hours led to a significant decrease in tumor-cell viability (Figure 3A) and an increase in the induction of apoptosis (Figure 3B,C). Also, at 12 hours, THC at a concentration of 3  $\mu\text{M}$  was able to cause a significant decrease in tumor-cell viability (Figure 3A). The data shown in Figure 3B and 3C demonstrate that apoptosis induced by THC was evident using both the TUNEL and annexin/PI methods. Previous studies have shown that cells positive for annexin alone represent early apoptotic cells, whereas those positive for both annexin and PI are late apoptotic/necrotic cells, and cells positive for PI alone are necrotic cells.<sup>15</sup> Thus, the majority of THC-treated cells appeared to be in an early or late apoptotic stage of death (Figure 3C). It was also noted that in serum-free medium, the time required to induce tumor-cell killing was decreased significantly to 4 hours at a concentration of 5  $\mu\text{M}$  THC (Figure 3A). Because serum interfered with THC-induced apoptosis, all subsequent experiments were performed in serum-free medium.

#### HU-210 and anandamide, but not WIN-55212, induce apoptosis in EL-4 tumor cells in vitro

Three additional cannabinoid receptor agonists were tested for their ability to induce apoptosis in EL-4 tumor cells. In Figure 4A, EL-4 tumor cells were exposed to 3  $\mu\text{M}$  THC, WIN55212, and HU-210 for 4 hours. The cells were then analyzed for apoptosis using the annexin/PI method (Figure 4A). The results showed that exposure to THC or HU-210 led to a significant increase in apoptosis when compared with the controls. In contrast, exposure to 3  $\mu\text{M}$  WIN55212 had no significant effect on the induction of apoptosis. In addition, we examined the effects of anandamide exposure on the induction of apoptosis (Figure 4B). EL-4 tumor cells were exposed to 5 and 10  $\mu\text{M}$  anandamide for 4 hours. The cells were analyzed for apoptosis using the TUNEL assay. The results showed that exposure to 5  $\mu\text{M}$  led to a slight increase in apoptosis;



**Figure 2.** Exposure of murine tumor cells of immune origin to THC in vitro leads to a reduction in cell viability and induction of apoptosis. (A) The effect of THC on tumor-cell viability was determined by culturing EL-4, LSA, and P815 tumor cells for 24 hours in medium containing 5% FCS in the presence of various concentrations of THC (1, 10, and 20  $\mu\text{M}$ ) or the vehicle. The viable cell number was determined by trypan blue dye exclusion. The data were expressed as percentage of control viable cell number. (B) The effect of THC on the induction of apoptosis in EL-4, LSA, and P815 tumor cells was determined by culturing the tumor cells for 24 hours in medium containing 5% FCS in the presence of 20  $\mu\text{M}$  THC (filled histogram) or the vehicle (empty histogram). Apoptosis was quantified using the TUNEL method, and the cells were analyzed using a flow cytometer.



**Figure 3. THC is more effective in serum-free medium.** (A) EL-4 tumor cells were cultured in serum-free medium in the presence of various concentrations of THC (1, 3, and 5  $\mu$ M) or the vehicle for 4, 8, or 12 hours. The number of viable cells was determined by trypan blue dye exclusion. The data represent the mean  $\pm$  SEM of duplicate wells. (B) EL-4 tumor cells were cultured in serum-free medium in the presence of vehicle control (DMSO) or THC (5  $\mu$ M) for 4 hours. The level of apoptosis induction was determined using the TUNEL method. (C) EL-4 cells cultured with THC as described above were stained with annexin V/PI and analyzed using a flow cytometer.

however, exposure to 10  $\mu$ M anandamide led to significant levels of apoptosis.

#### THC treatment leads to reduced tumor burden and apoptosis in vivo

We examined whether treatment of tumor-bearing mice with THC was effective at killing tumor cells in vivo. To this end, C57BL/6 mice were injected with EL-4 tumor cells ( $1 \times 10^6$ ). On day 10 of tumor growth, the mice were injected IP with various doses of THC (1, 3, or 5 mg/kg) or the vehicle. One day later, the mice were killed and injected with 5 mL PBS into the peritoneal cavity. The peritoneal fluid was aspirated and analyzed for viable tumor cells and for apoptosis. The data demonstrated that THC caused a dose-dependent decrease in the viable tumor-cell number found in the peritoneal cavity (Figure 5A). THC failed to cause a decrease in cellularity at 1 mg/kg, but it was effective at 3 and 5 mg/kg. Furthermore, when cells collected from mice treated with 5 mg/kg were analyzed for apoptosis, a significant proportion (77.3%) of the tumor cells showed apoptosis (Figure 5B). These data suggest that THC was effective in vivo to induce apoptosis and kill the EL-4 tumor cells.

#### THC treatment can cure tumor-bearing mice

Next we tested whether THC treatment can cure EL-4 tumor-bearing mice. To this end, mice were injected with EL-4 tumor cells ( $1 \times 10^6$ ) and then given a daily injection of 5 mg/kg THC for 14

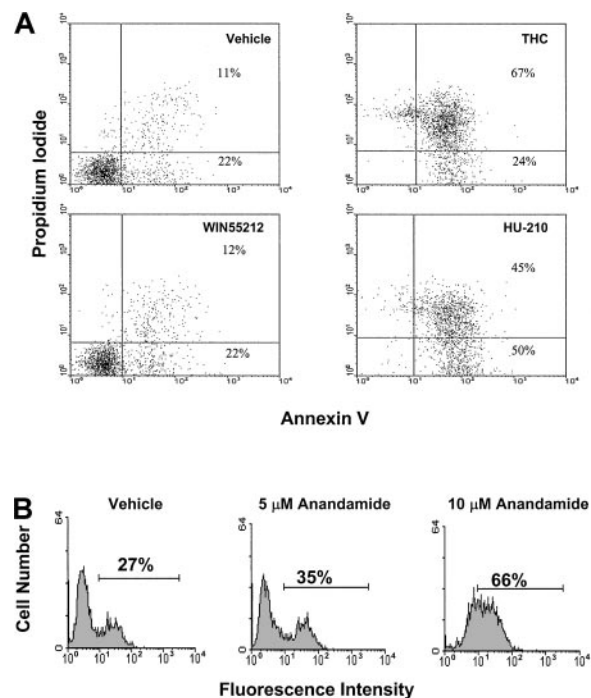
days. The mice were observed for survival and, upon exhibiting signs of morbidity, were immediately euthanized. The results showed that treatment with THC led to a significant increase in survival (Figure 6). Interestingly, 25% of the mice survived the tumor challenge (Figure 6). Also, they were completely cured inasmuch as they were resistant to rechallenge with the specific tumor (data not shown). Taken together, these results suggest that THC can exert anticancer properties in vivo.

#### Expression of CB1 and CB2 cannabinoid receptors on human Molt-4, Jurkat, and Sup-T1 tumor-cell lines

Next, we tested whether human leukemia/lymphoma cell lines express cannabinoid receptors. The expression of CB1 and CB2 cannabinoid receptor mRNA was determined using RT-PCR analysis (Figure 7). The results showed that all 3 cell lines screened expressed significant levels of CB2 mRNA. However, unlike in the murine tumor-cell lines, CB1 mRNA was not detected in these 3 cell lines. In these experiments, we used a human glioma cell line, U251, as a positive control for CB1 expression.

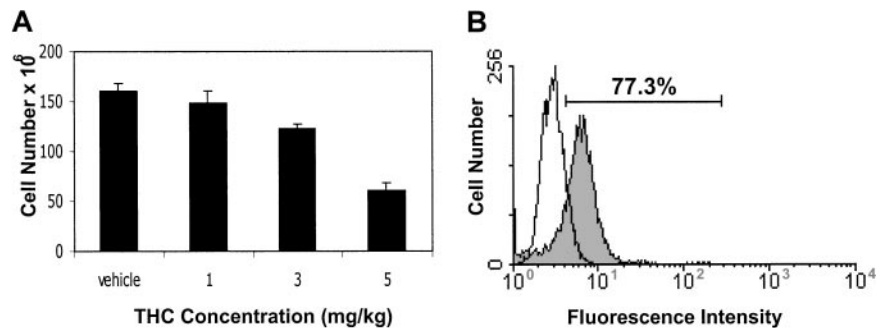
#### THC, HU-210, and anandamide induce apoptosis in human leukemia and lymphoma cell lines in vitro

Next, we examined whether exposure of human leukemia and lymphoma cell lines to THC or HU-210 would lead to induction of apoptosis. To this end, human tumor-cell lines Jurkat, Molt-4, and Sup-T1 were exposed to various concentrations of THC, HU-210 (2.5, 5, and 10  $\mu$ M), or the vehicle for 4 hours, and the induction of apoptosis was determined using the TUNEL method. The results showed that exposure of the Jurkat, Molt-4, and Sup-T1 cell lines



**Figure 4. THC, HU-210, and anandamide, but not WIN55212, induce apoptosis in EL-4 tumor cells in vitro.** (A) EL-4 tumor cells were cultured in serum-free medium for 4 hours in the presence of vehicle, THC (3  $\mu$ M), WIN55212 (3  $\mu$ M), and HU-210 (3  $\mu$ M). The level of apoptosis was quantified by annexin/PI staining, as described in Figure 3. (B) EL-4 tumor cells were cultured in serum-free medium for 4 hours in the presence of vehicle or anandamide (5 and 10  $\mu$ M). The level of apoptosis was quantified by TUNEL assay.

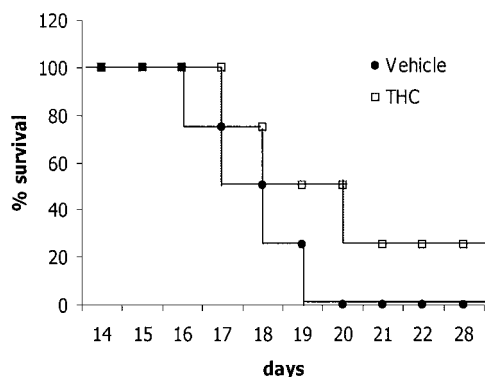
**Figure 5. THC treatment leads to reduced tumor burden and tumor-cell apoptosis in vivo.** C57BL/6 mice were injected IP on day 0 with  $1 \times 10^6$  EL-4 tumor cells. On day 10, the mice were treated with various doses of THC (1, 3, or 5 mg/kg IP) or the vehicle. One day later, the peritoneal cavity was flushed with 5 mL PBS, and the tumor cells were collected by aspiration. (A) The cell number was determined by trypan blue dye exclusion. The data represent the mean  $\pm$  SEM from groups of 3 mice. (B) The tumor cells recovered from the peritoneal cavity were tested for apoptosis using the TUNEL method. Filled histogram shows tumor cells exposed to THC and open histogram shows cells exposed to the vehicle.



to greater than or equal to  $5 \mu\text{M}$  THC or HU-210 led to significant levels of apoptosis (Figure 8A). THC at  $10 \mu\text{M}$  and HU-210 at  $5 \mu\text{M}$  concentrations caused greater than 80% apoptosis (Figure 8A). Figure 8B shows a representative experiment using the TUNEL assay. In addition, we examined the effects of anandamide exposure on the induction of apoptosis in Molt-4 tumor cells. Molt-4 tumor cells were cultured for 4 hours in the absence or presence of various concentrations of anandamide (5, 10, 20, and  $40 \mu\text{M}$ ). The level of apoptosis was quantified using the TUNEL method (Figure 9). The results showed that anandamide at concentrations of  $20 \mu\text{M}$  or greater induced significant levels of apoptosis in Molt-4 tumor cells. Together, these data suggest that THC, HU-210, and anandamide can induce apoptosis in various human leukemia and lymphoma cell lines.

#### THC-induced reduction in viable cell number is mediated through the CB1 and CB2 cannabinoid receptors

Because the human tumor-cell lines screened exhibited CB2 but not CB1 receptors, we tested whether THC was acting through CB2 receptors to induce apoptosis. To this end, Jurkat and Sup-T1 cells were incubated with  $5 \mu\text{M}$  THC in the presence of CB2 antagonists or the vehicle. After 4 hours, the viable cell number was determined by trypan blue dye exclusion (Figure 10). The results showed that exposure to THC led to a dramatic reduction in the number of viable tumor cells. However, when the cells were cocultured with the CB2 antagonist, the viable cell numbers increased significantly, thereby reversing the effect of THC. Together, these results suggest that THC-induced reduction in viable cell number and increase in the induction of apoptosis were mediated through the CB2 cannabinoid receptors.



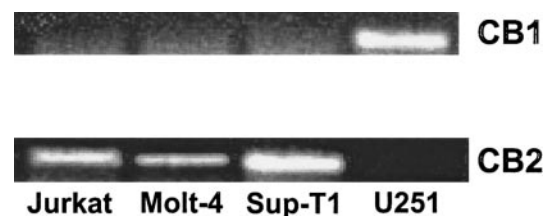
**Figure 6. Treatment with THC increases survival of EL-4 tumor-bearing mice.** C57BL/6 mice (8 per group) were injected IP with  $1 \times 10^6$  EL-4 tumor cells on day 0. From day 1 onward, the mice were treated daily for 14 days with THC (5 mg/kg) or the vehicle control by the IP route. The mice were observed daily for survival and signs of morbidity. The data depicted are representative of 3 separate experiments.

#### Exposure of Jurkat and Molt-4 tumor cells to CB2 receptor agonist, JWH-015, leads to a reduction in viability and induction of apoptosis in vitro

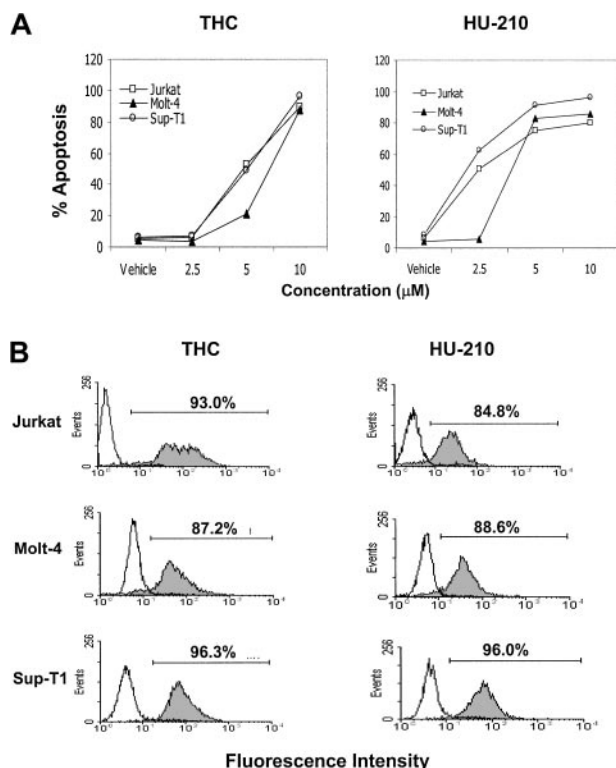
Next we examined whether exposure to a CB2-selective agonist would lead to tumor-cell death and induction of apoptosis. Jurkat and Molt-4 tumor cells were exposed to various concentrations of the CB2-selective agonist JWH-015 (1, 5, 10, and  $20 \mu\text{M}$ ) or the vehicle in serum-free medium for 24 hours. The results showed that exposure of Molt-4 and Jurkat tumor cells to  $5 \mu\text{M}$  or greater concentrations of JWH-015 led to a significant decrease in the number of viable tumor cells (Figure 11A). Next, we examined whether exposure to JWH-015 would lead to the induction of apoptosis. Jurkat and Molt-4 tumor cells were exposed to JWH-015 for 24 hours, and apoptosis was determined by TUNEL assay (Figure 11B). The results showed that exposure of Jurkat and Molt-4 tumor cells to  $5 \mu\text{M}$  JWH-015 led to significant induction of apoptosis. Together these results suggest that treatment of Jurkat and Molt-4 tumor cells with CB2-selective agonist can lead to a significant reduction in cell viability and induction of apoptosis.

#### THC induces apoptosis in primary ALL cells in vitro

Next we examined whether exposure of primary ALL cells to THC would have any effect on tumor-cell viability or induction of apoptosis. To this end, lymphoblasts isolated from peripheral blood of 2 patients with ALL (ALL no. 1 and ALL no. 2) were cultured in the presence of various concentrations of THC (1, 5, and  $10 \mu\text{M}$ ) or vehicle (DMSO) for 2 hours. The viable cellularity was determined by trypan blue dye exclusion. The results showed that exposure of the ALL samples to  $5 \mu\text{M}$  or greater concentrations of THC resulted in significant reduction in viability (Figure 12A). In addition, we examined the effect of THC exposure on the induction of apoptosis using the TUNEL method and observed that exposure of cells from both ALL patients to  $5 \mu\text{M}$  or greater concentrations of THC led to significant induction of apoptosis (Figure 12B).



**Figure 7. The expression of CB1 and CB2 mRNA in Molt-4, Jurkat, Sup-T1, and U251 human tumor cells.** The expression of CB1 and CB2 was determined by RT-PCR analysis. Total RNA was isolated from Molt-4, Jurkat, Sup-T1, and U251 tumor cells. mRNA was reverse transcribed and amplified by PCR with primers specific for CB1 and CB2. A photograph of ethidium bromide-stained amplicons is depicted.

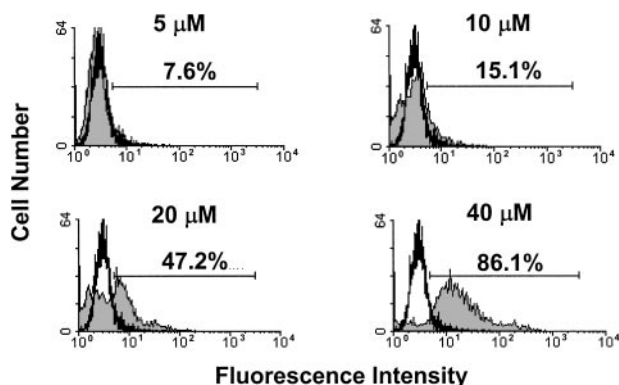


**Figure 8.** THC and HU-210 exposure leads to the induction of apoptosis in human lymphoid tumors *in vitro*. Human tumors Molt-4, Jurkat, and Sup-T1 were cultured in serum-free medium in the presence or absence of various concentrations of THC, HU-210 (2.5, 5, and 10 µM), or the vehicle for 4 hours. (A) The induction of apoptosis was determined by the TUNEL method, and the percentage of apoptotic cells was plotted. (B) A representative experiment in which human tumor cells cultured with 10 µM of THC or HU-210 (filled histograms) or the vehicle (open histograms) were analyzed for apoptosis using TUNEL assay.

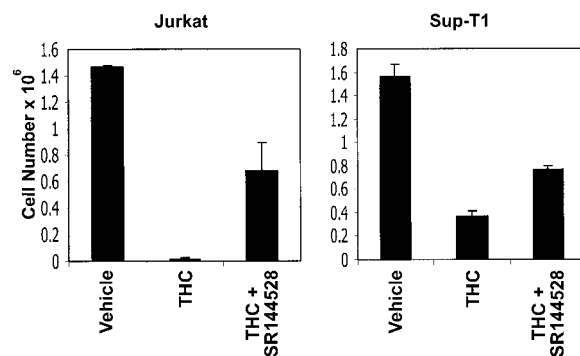
These results were further corroborated by staining the ALL cells with annexin V and PI (data not shown). Together, these results suggest that exposure of primary ALL cells to THC can lead to significant tumor killing mediated by the induction of apoptosis.

## Discussion

In the current study, we demonstrated that THC and other cannabinoids can induce apoptosis in murine and human leukemia



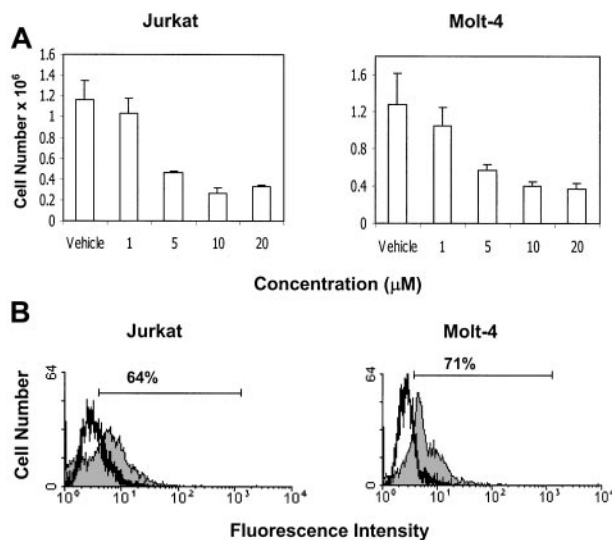
**Figure 9.** Anandamide exposure leads to the induction of apoptosis in Molt-4 tumor cells *in vitro*. Molt-4 tumor cells were cultured in serum-free medium in the presence or absence of various concentrations of anandamide (5, 10, 20, and 40 µM) or the vehicle for 4 hours. The induction of apoptosis was determined by the TUNEL method. A representative experiment in which Molt-4 tumor cells were cultured with anandamide (filled histogram) or the vehicle (open histogram) is depicted.



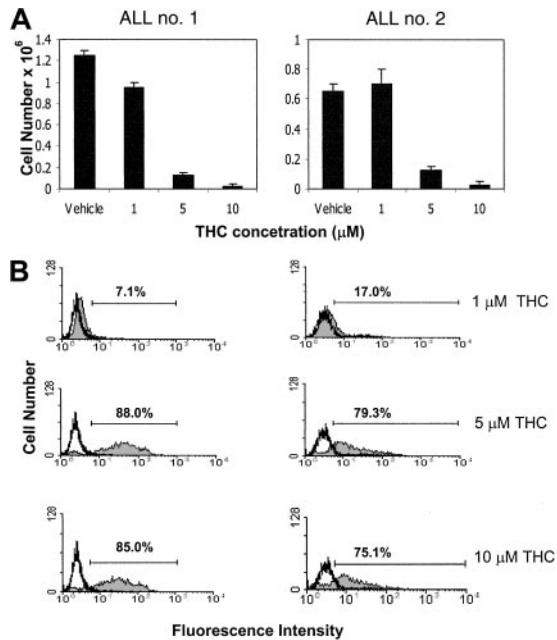
**Figure 10.** CB2 receptor antagonists can reverse the toxicity of THC. Jurkat and Sup-T1 human tumor cells were cultured for 4 hours in the presence of THC (5 µM) or the vehicle. In addition, the cultures received the CB2 antagonist (5 µM). The viable cell number was determined by trypan blue dye exclusion. The data represent the mean ± SEM of triplicate cultures.

and lymphoma cell lines as well as primary ALL cells. The human tumor-cell lines screened expressed CB2 but not CB1 receptors, whereas the murine tumors expressed both CB1 and CB2 receptors. Ligation of CB2 receptors was sufficient to induce apoptosis in tumor cells. Also, THC-induced apoptosis in human tumor-cell lines was reversed by CB2 antagonists. THC was effective not only *in vitro* but also *in vivo*, as demonstrated by its ability to induce apoptosis and decrease the tumor load. Moreover, THC treatment could cure approximately 25% of the mice bearing a syngeneic tumor. Together, our data suggest for the first time that targeting CB2 receptors on tumor cells of immune origin may constitute a novel approach to treating such cancers.

The interactions between cannabinoids and their receptors in regulating neurobehavioral functions have been extensively studied. Cannabinoids have also been shown to alter immune functions, although the precise mechanisms remain unclear. Also, the physiologic functions of cannabinoid receptors on immune cells and the



**Figure 11.** Exposure to the CB2-selective agonist JWH-015 leads to reduced cell viability and induction of apoptosis in Jurkat and Molt-4 tumor cells *in vitro*. (A) The effect of JWH-015 on tumor-cell viability was determined by culturing Jurkat and Molt-4 tumor cells for 24 hours in serum-free medium in the presence of various concentrations of JWH-015 (1, 5, 10, and 20 µM) or the vehicle. The viable cell number was determined by trypan blue dye exclusion. (B) The effect of JWH-015 on the induction of apoptosis in Jurkat and Molt-4 tumor cells was determined by culturing the tumor cells for 24 hours in serum-free medium in the presence of 5 µM JWH-015 (filled histogram) or the vehicle (empty histogram). Apoptosis was quantified using the TUNEL method, and the cells were analyzed using a flow cytometer.



**Figure 12. THC induces apoptosis in primary ALL cells in vitro.** (A) The effect of THC on primary ALL cell viability was determined by culturing the cells for 2 hours in serum-free medium in the presence of various concentrations of THC (1, 5, and 10  $\mu$ M) or the vehicle. The viable cell number was determined by trypan blue dye exclusion. (B) The effect of THC on the induction of apoptosis in primary ALL cells was determined by TUNEL assay, as described in Figure 2. Tumor cells were cultured as described above with THC (filled histogram) or the vehicle (empty histogram). Apoptosis was quantified using the TUNEL method, and the cells were analyzed using a flow cytometer. The percentage of apoptotic cells following THC exposure is depicted in each histogram.

role played by endocannabinoids in immune-cell regulation remain unresolved. Recent studies from our laboratory demonstrated that administration of THC into C57BL/6 mice led to a marked decrease in the cellularity of the thymus and spleen that resulted from the induction of apoptosis in immune cells (manuscript submitted for publication). Recently, cannabinoids were also shown to induce apoptosis in tumor cells in vitro.<sup>9,10,12,18,19</sup> Together, such studies suggest the possible use of cannabinoids as anticancer agents.

The exact mechanism by which THC induces apoptosis in normal and transformed lymphocytes remains unclear. It is believed that THC and other cannabinoids can act by 2 distinct mechanisms. Because of its lipophilic properties, it was thought that THC acted through direct intercalation into the cell membrane. However, it was soon realized that the activity of cannabinoids was highly stereospecific, suggesting that the lipophilic properties were not solely responsible for the cannabinoids' activity. Since then, receptors for cannabinoids have been characterized. These receptors share only 44% homology, but most cannabinoids tested show similar binding affinity to both receptors.<sup>20</sup> Both receptors are coupled to G-protein, suggesting that endogenous cannabinoids may play a role in cell signaling.<sup>1</sup> Therefore, it is possible that the observed effects of THC on the immune response, including the induction of apoptosis, may be mediated by signals initiated through these receptors. For example, Galve-Roperh et al<sup>12</sup> demonstrated that apoptosis induced by THC in C6 glioma cells in vivo involved a cannabinoid receptor-dependent pathway. In contrast, others have shown in C6 glioma or a prostate cancer cell model that THC-induced apoptosis was independent of the involvement of the CB1 and CB2 receptors.

In the current study, several observations suggested that ligation of the CB2 receptor can induce apoptosis in tumors of immune origin. For example, the human tumor cells such as Jurkat and Sup-T1 expressed

only CB2 receptors, and the THC-induced apoptosis in these tumor cells was inhibited at least in part by CB2 antagonists. These studies, however, did not rule out the possibility that ligation of CB1 receptors on murine tumors of immune origin would also induce apoptosis. In fact, we have observed that addition of CB1 antagonist to the EL-4 tumor cells can also inhibit the apoptosis induced by THC (R.J.M., P.S.N., M.N., unpublished results, August 2001). It should be noted, however, that the cannabinoid receptor antagonists can act as inverse agonists<sup>21,22</sup> and thereby prevent apoptosis through an alternate pathway. It is for this reason that we used in the current study human cell lines that expressed only the CB2 receptors and showed using CB2 antagonists that ligation of CB2 receptors alone is sufficient to induce apoptosis.

THC is well known for its impact on the cytokine network.<sup>23</sup> For example, the presence of THC or activation of the CB1/CB2 receptors can block forskolin-induced accumulation of cyclic adenosine monophosphate (cAMP),<sup>24-26</sup> and reduced cAMP levels correlate with the repression of interleukin-2 (IL-2) transcription and secretion.<sup>27</sup> IL-2 plays an important role in the regulation of apoptosis.<sup>28-30</sup> Therefore, reduction in the levels of IL-2 or other cytokines following exposure to THC may partly account for increased apoptosis. In fact, previous studies from our laboratory have demonstrated that IL-2 can act as an autocrine growth factor in the autonomous proliferation of transformed T cells.<sup>31,32</sup> Thus, inhibition of IL-2 production by THC could lead to decreased proliferation and apoptotic cell death.

CB1 receptors are expressed in the central nervous system as well as the pituitary gland, immune cells, reproductive tissues, gastrointestinal tissues, heart, lungs, urinary bladder, and adrenals (reviewed by Berdyshv<sup>1</sup>). In contrast, CB2 receptors are found primarily in immune cells, including T cells, B cells, natural killer cells, macrophages, neutrophils, and mast cells.<sup>33,34</sup> Thus, the selective expression of CB2 receptors on the immune cells provides a unique opportunity to target malignancies of the immune system by using CB2 agonists to induce apoptosis and thereby provide new avenues to treat such cancers. The advantage in using CB2-selective agonists also stems from the fact that such a treatment is devoid of the psychotropic effects that are characteristic of CB1 agonists. Thus, it is possible to synthesize new ligands for CB2 receptors and test them for their efficacy against tumors of immune origin. It should be noted that in the current study, we randomly selected a few murine and human tumor-cell lines of immune origin that were all found to be sensitive to cannabinoid-induced apoptosis. Recently, however, we identified a human cell line that was resistant, and further studies are in progress to address whether this cell line lacks physical or functional cannabinoid receptors and/or signaling molecules that trigger apoptosis.

The dose of THC that induced apoptosis in vitro in the current study was found to be 10  $\mu$ M or greater using serum-containing medium and 3  $\mu$ M or higher in serum-free medium. Similar observations were made by others who also noted that THC was less effective in inducing cell death in the presence of serum.<sup>17</sup> This is believed to be the result of direct interactions between serum proteins, such as albumin, and cannabinoids.<sup>16</sup> The doses of THC used in vitro in the current study were pharmacologically relevant because in an earlier study, rats injected with 50 mg/kg THC were shown to exhibit 10  $\mu$ M THC in the serum within 10 hours of administration.<sup>35</sup> Also, in these studies, mice were given as high as 500 mg/kg 5 times a week for 2 years. Interestingly, despite such high doses, the survival of dosed rats was higher than in controls. Also, the incidence of a wide range of cancers in mice and rats treated with THC was reduced in a dose-dependent manner.<sup>35</sup> In the current study, we also observed that cannabinoid agonist WIN55212 failed to induce apoptosis, similar to the findings of Ruiz et al<sup>10</sup> in the human prostate-tumor model. The reason why WIN55212 fails to induce



apoptosis is not clear. However, we speculate that it is due to differences in the structure and binding abilities to the cannabinoid receptors when compared with the classic cannabinoids such as THC and HU-210.<sup>20</sup> In most previous studies, the effect of THC or other cannabinoids in inducing apoptosis in nonlymphoid tumor-cell lines was seen only after exposure for 2 or more days.<sup>9,10,12,13</sup> In contrast, in the current study, we were able to demonstrate marked induction of apoptosis in lymphoid tumors as early as 4 hours following culture with THC. These data suggest that lymphoid tumors may be highly sensitive to THC-induced apoptosis. Anandamide was shown recently to induce apoptosis in human neuroblastoma (CHP100) and lymphoma (U937) cells.<sup>18</sup> These authors demonstrated that anandamide-induced apoptosis was independent of cannabinoid receptors and was induced through vanilloid receptors. In the current study, we also observed that anandamide was effective at inducing apoptosis in lymphoid cell lines that were screened. Further studies are in progress to determine the involvement of vanilloid or cannabinoid receptors in anandamide-induced apoptosis.

In the current study, we observed that THC was able to induce apoptosis in tumor cells not only *in vitro*, but also *in vivo*. Furthermore, THC was effective in reducing the tumor load,

prolonging the mean survival time of tumor-bearing mice, as well as curing a significant proportion of such mice. Because THC is immunosuppressive and EL-4 is an immunogenic tumor,<sup>36</sup> it is possible that the immunosuppressive effects of THC may have interfered with the host's antitumor immunity, which may account for a lower percentage of cures. Thus, further manipulations of the dose of THC that would induce significant apoptosis without causing significant suppression of antitumor immunity may lead to development of a treatment regimen that may cure a larger percentage of tumor-bearing mice. Such studies are currently in progress.

The current study demonstrates that targeting CB2 receptors to induce apoptosis may constitute a novel approach to treating malignancies of the immune system. The advantage in using CB2 receptor agonists is that they do not exhibit psychoactive properties. Also, because CB2 receptors are expressed exclusively on immune cells, use of CB2 receptor agonists will not be toxic to nonimmune cells. Thus, further research on CB2 receptor agonists to target transformed immune cells could lead to discovery of a new class of highly selective anticancer agents.

## References

- Berdyshev EV. Cannabinoid receptors and the regulation of immune response. *Chem Phys Lipids*. 2000;108:169-190.
- Watson SJ, Benson JA Jr, Joy JE. Marijuana and medicine: assessing the science base: a summary of the 1999 Institute of Medicine report. *Arch Gen Psychiatry*. 2000;57:547-552.
- Devane WA, Dysarz FA 3rd, Johnson MR, Melvin LS, Howlett AC. Determination and characterization of a cannabinoid receptor in rat brain. *Mol Pharmacol*. 1988;34:605-613.
- Munro S, Thomas KL, Abu-Shaar M. Molecular characterization of a peripheral receptor for cannabinoids. *Nature*. 1993;365:61-65.
- Devane WA, Hanus L, Breuer A, et al. Isolation and structure of a brain constituent that binds to the cannabinoid receptor. *Science*. 1992;258:1946-1949.
- Felder CC, Briley EM, Axelrod J, Simpson JT, Mackie K, Devane WA. Anandamide, an endogenous cannabimimetic eicosanoid, binds to the cloned human cannabinoid receptor and stimulates receptor-mediated signal transduction. *Proc Natl Acad Sci U S A*. 1993;90:7656-7660.
- Mechoulam R, Ben-Shabat S, Hanus L, et al. Identification of an endogenous 2-monoglyceride, present in canine gut, that binds to cannabinoid receptors. *Biochem Pharmacol*. 1995;50:83-90.
- De Petrocellis L, Melck D, Palmisano A, et al. The endogenous cannabinoid anandamide inhibits human breast cancer cell proliferation. *Proc Natl Acad Sci U S A*. 1998;95:8375-8380.
- Sanchez C, Galve-Roperh I, Canova C, Brachet P, Guzman M. Delta9-tetrahydrocannabinol induces apoptosis in C6 glioma cells. *FEBS Lett*. 1998;436:6-10.
- Ruiz L, Miguel A, Diaz-Laviada I. Delta9-tetrahydrocannabinol induces apoptosis in human prostate PC-3 cells via a receptor-independent mechanism. *FEBS Lett*. 1999;458:400-404.
- Campbell VA. Tetrahydrocannabinol-induced apoptosis of cultured cortical neurons is associated with cytochrome c release and caspase-3 activation. *Neuropharmacology*. 2001;40:702-709.
- Galve-Roperh I, Sanchez C, Cortes ML, del Pulgar TG, Izquierdo M, Guzman M. Anti-tumoral action of cannabinoids: involvement of sustained ceramide accumulation and extracellular signal-regulated kinase activation. *Nat Med*. 2000;6:313-319.
- Sanchez C, de Ceballos ML, del Pulgar TG, et al. Inhibition of glioma growth *in vivo* by selective activation of the cb(2) cannabinoid receptor. *Cancer Res*. 2001;61:5784-5789.
- Kamath AB, Xu H, Nagarkatti PS, Nagarkatti M. Evidence for the induction of apoptosis in thymocytes by 2,3,7,8-tetrachlorodibenzo-p-dioxin *in vivo*. *Toxicol Appl Pharmacol*. 1997;142:367-377.
- Chen D, McKallip RJ, Zeytun A, et al. CD44-deficient mice exhibit enhanced hepatitis after concanavalin A injection: evidence for involvement of CD44 in activation-induced cell death. *J Immunol*. 2001;166:5889-5897.
- Zheng ZM, Specter S, Friedman H. Serum proteins affect the inhibition by delta-tetrahydrocannabinol of tumor necrosis factor alpha production by mouse macrophages. *Adv Exp Med Biol*. 1993;335:89-93.
- Jacobsson SO, Rongard E, Stridh M, Tiger G, Fowler CJ. Serum-dependent effects of tamoxifen and cannabinoids upon C6 glioma cell viability. *Biochem Pharmacol*. 2000;60:1807-1813.
- Maccarrone M, Lorenzon T, Bari M, Melino G, Finazzi-Agro A. Anandamide induces apoptosis in human cells via vanilloid receptors: evidence for a protective role of cannabinoid receptors. *J Biol Chem*. 2000;275:31938-31945.
- Sarker KP, Obara S, Nakata M, Kitajima I, Maruyama I. Anandamide induces apoptosis of PC-12 cells: involvement of superoxide and caspase-3. *FEBS Lett*. 2000;472:39-44.
- Pertwee RG. Pharmacology of cannabinoid receptor ligands. *Curr Med Chem*. 1999;6:635-664.
- Landsman RS, Burkey TH, Consroe P, Roeske WR, Yamamura HI. SR141716A is an inverse agonist at the human cannabinoid CB1 receptor. *Eur J Pharmacol*. 1997;334:R1-R2.
- Portier M, Rinaldi-Carmona M, Pececu F, et al. SR144528, an antagonist for the peripheral cannabinoid receptor that behaves as an inverse agonist. *J Pharmacol Exp Ther*. 1999;288:582-589.
- Klein TW, Lane B, Newton CA, Friedman H. The cannabinoid system and cytokine network. *Proc Soc Exp Biol Med*. 2000;225:1-8.
- Koh WS, Crawford RB, Kaminski NE. Inhibition of protein kinase A and cyclic AMP response element (CRE)-specific transcription factor binding by delta9-tetrahydrocannabinol (delta9-THC): a putative mechanism of cannabinoid-induced immune modulation. *Biochem Pharmacol*. 1997;53:1477-1484.
- Schatz AR, Lee M, Condie RB, Pulaski JT, Kaminski NE. Cannabinoid receptors CB1 and CB2: a characterization of expression and adenylate cyclase modulation within the immune system. *Toxicol Appl Pharmacol*. 1997;142:278-287.
- Herring AC, Koh WS, Kaminski NE. Inhibition of the cyclic AMP signaling cascade and nuclear factor binding to CRE and kappaB elements by cannabinal, a minimally CNS-active cannabinoid. *Biochem Pharmacol*. 1998;55:1013-1023.
- Novak TJ, Chen D, Rothenberg EV. Interleukin-1 synergy with phosphoinositide pathway agonists for induction of interleukin-2 gene expression: molecular basis of costimulation. *Mol Cell Biol*. 1990;10:6325-6334.
- Lenardo MJ. Interleukin-2 programs mouse alpha beta T lymphocytes for apoptosis. *Nature*. 1991;353:858-861.
- Deng G, Podack ER. Suppression of apoptosis in a cytotoxic T-cell line by interleukin 2-mediated gene transcription and deregulated expression of the protooncogene bcl-2. *Proc Natl Acad Sci U S A*. 1993;90:2189-2193.
- Zhang X, Giangreco L, Broome HE, Dargan CM, Swain SL. Control of CD4 effector fate: transforming growth factor beta 1 and interleukin 2 synergize to prevent apoptosis and promote effector expansion. *J Exp Med*. 1995;182:699-709.
- Nagarkatti M, Hassuneh M, Seth A, Manickasundari K, Nagarkatti PS. Constitutive activation of the interleukin 2 gene in the induction of spontaneous *in vitro* transformation and tumorigenicity of T cells. *Proc Natl Acad Sci U S A*. 1994;91:7638-7642.
- Hassuneh MR, Nagarkatti PS, Nagarkatti M. Evidence for the participation of interleukin-2 (IL-2) and IL-4 in the regulation of autonomous growth and tumorigenesis of transformed cells of lymphoid origin. *Blood*. 1997;89:610-620.
- Pertwee RG. Pharmacology of cannabinoid CB1 and CB2 receptors. *Pharmacol Ther*. 1997;74:129-180.
- Klein TW, Newton C, Friedman H. Cannabinoid receptors and immunity. *Immunol Today*. 1998;19:373-381.
- Chan PC, Sills RC, Braun AG, Haseman JK, Bucher JR. Toxicity and carcinogenicity of delta 9-tetrahydrocannabinol in Fischer rats and B6C3F1 mice. *Fundam Appl Toxicol*. 1996;30:109-117.
- Iezzi G, Rivolta L, Ronchetti A, et al. The immunogenicity of experimental tumors is strongly biased by the expression of dominant viral cytotoxic T-lymphocyte epitopes. *Cancer Res*. 1997;57:2564-2568.