

---

*INVITED REVIEW*

---

# Cannabis and the brain

---

Leslie Iversen

*Department of Pharmacology, University of Oxford, Oxford, UK*

*Correspondence to: Leslie Iversen, Department of Pharmacology, University of Oxford, Mansfield Road, Oxford OX1 3QT, UK  
E-mail: les.iversen@pharm.ox.ac.uk*

## Summary

The active compound in herbal cannabis,  $\Delta^9$ -tetrahydrocannabinol, exerts all of its known central effects through the CB<sub>1</sub> cannabinoid receptor. Research on cannabinoid mechanisms has been facilitated by the availability of selective antagonists acting at CB<sub>1</sub> receptors and the generation of CB<sub>1</sub> receptor knockout mice. Particularly important classes of neurons that express high levels of CB<sub>1</sub> receptors are GABAergic interneurons in hippocampus, amygdala and cerebral cortex, which also contain the neuropeptides cholecystinin. Activation of CB<sub>1</sub> receptors leads to inhibition of the release of amino acid and monoamine neurotransmitters. The lipid derivatives anandamide and 2-arachidonylglycerol act as endogenous ligands for CB<sub>1</sub> receptors (endocannabinoids). They may act as retrograde synaptic mediators of the phenomena of depolarization-induced suppression of inhibition or excitation in hippocampus and cerebellum. Central effects of cannabinoids

include disruption of psychomotor behaviour, short-term memory impairment, intoxication, stimulation of appetite, antinociceptive actions (particularly against pain of neuropathic origin) and anti-emetic effects. Although there are signs of mild cognitive impairment in chronic cannabis users there is little evidence that such impairments are irreversible, or that they are accompanied by drug-induced neuropathology. A proportion of regular users of cannabis develop tolerance and dependence on the drug. Some studies have linked chronic use of cannabis with an increased risk of psychiatric illness, but there is little evidence for any causal link. The potential medical applications of cannabis in the treatment of painful muscle spasms and other symptoms of multiple sclerosis are currently being tested in clinical trials. Medicines based on drugs that enhance the function of endocannabinoids may offer novel therapeutic approaches in the future.

**Keywords:** cannabinoid CB<sub>1</sub> receptor;  $\Delta^9$ -tetrahydrocannabinol; rimonabant (SR141716A); anandamide; 2-arachidonylglycerol

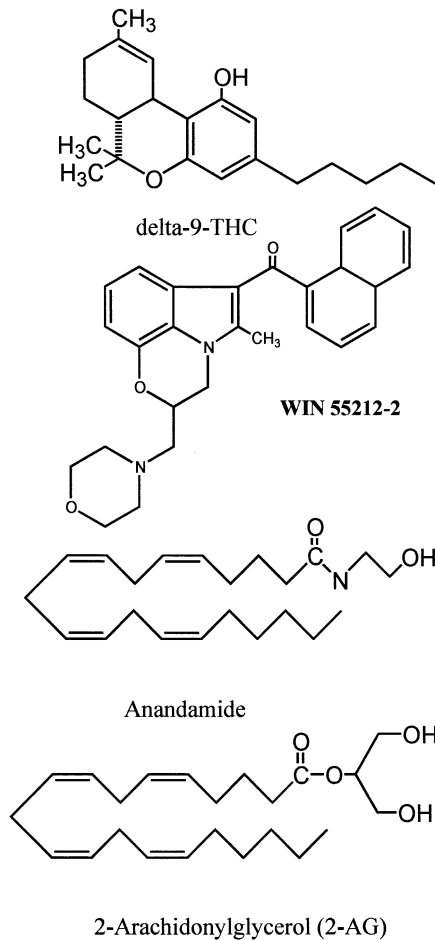
**Abbreviations:** 2-AG = 2-arachidonylglycerol; DSI = depolarization-induced suppression of inhibition; FAAH = fatty acid amide hydrolase; Gi/o = G-proteins negatively linked to adenylate cyclase or to inositol phosphates; LTD = long-term depression; LTP = long-term potentiation; mGlu = metabotropic glutamate; NMDA = *N*-methyl-D-aspartate; THC =  $\Delta^9$ -tetrahydrocannabinol

---

## Introduction

A large literature exists on the effects of cannabis, with many of the earlier studies conducted in human subjects (Mendelson *et al.*, 1976; Jones, 1978; Hollister, 1986). Unfortunately, much of this research would now be regarded as inadequately controlled and poorly designed. However, research on cannabis has been stimulated in recent years by the recognition that specific receptors exist in the brain that

recognize cannabinoids, and by the discovery of a series of endogenous cannabinoids that act as ligands for these receptors. As was the case with opiate research in the 1970s, research on a psychoactive drug of plant origin has revealed a hitherto unknown physiological control mechanism. This review will focus mainly on the more recent literature in this field.

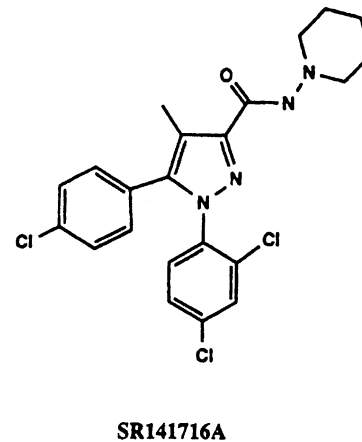


**Fig. 1** Chemical structures of THC, the synthetic CB<sub>1</sub> receptor agonist WIN 55,2122 and the endocannabinoids.

## The cannabinoid system in brain

### Exogenous cannabinoids and their receptors

The principal active component in the complex mixture of cannabinoids present in extracts of the plant *Cannabis sativa* is  $\Delta^9$ -tetrahydrocannabinol (THC) (Mechoulam, 1970) (Fig. 1). THC is a sticky resin that is not soluble in water. Smoking remains the most efficient means of delivering the drug and experienced users can titrate the dose by adjusting the frequency and depth of inhalation (Iversen, 2000). THC or cannabis extracts can also be taken orally in fat-containing foods or dissolved in a suitable pharmaceutical oil, but absorption is delayed and variable (Iversen, 2000). A series of man-made synthetic cannabinoids, some of which are more potent and more water soluble than THC, is also available (Pertwee, 1999) (Fig. 1). All of these compounds act as agonists at the CB<sub>1</sub> cannabinoid receptor (Matsuda *et al.*, 1990), which is the only one known to be expressed in the brain. A second cannabinoid receptor, CB<sub>2</sub>, is expressed only in peripheral tissues, principally in the immune system (Munro *et al.*, 1993; Felder and Glass, 1998; Pertwee, 1999). THC and

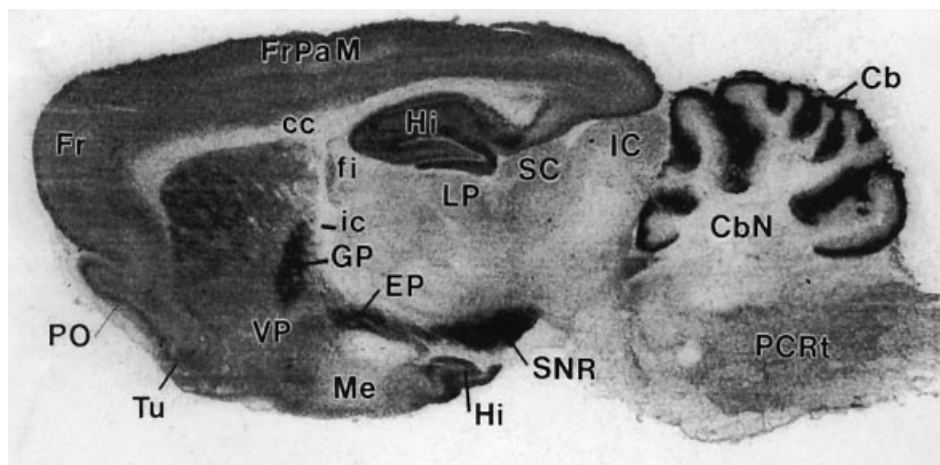


**Fig. 2** Chemical structure of the CB<sub>1</sub> selective antagonist drug rimonabant (SR141716A).

the synthetic cannabinoids also act to some extent as agonists at the CB<sub>2</sub> receptor. Both cannabinoid receptors are members of the G-protein coupled class, and their activation is linked to inhibition of adenylate cyclase activity (Howlett *et al.*, 1988). A series of synthetic drugs is also now available that act as specific antagonists at CB<sub>1</sub> or CB<sub>2</sub> receptors (D'Souza and Kosten, 2001). One of these compounds, rimonabant (SR141716A), which acts selectively to block CB<sub>1</sub> receptors (Rinaldi-Carmona *et al.*, 1994; Compton *et al.*, 1996), has been widely used in studies of the actions of cannabinoids in the CNS (Fig. 2).

### Endogenous cannabinoids

Following the discovery of specific cannabinoid receptors, a search was made for naturally occurring ligands of these receptors in mammalian tissues. This led to the discovery of a series of arachidonic acid derivatives with potent actions at cannabinoid receptors. These are: anandamide (*N*-arachidonyl-ethanolamine; Devane *et al.*, 1992), 2-arachidonylglycerol (2-AG; Mechoulam *et al.*, 1995; Sugiura *et al.*, 1995; Stella *et al.*, 1997) and 2-arachidonylglyceryl ether (Hanuš *et al.*, 2001) (Fig. 1). Of these, anandamide is the ligand that has been most extensively studied so far. The endogenous cannabinoids known as 'endocannabinoids' are present only in small amounts in the brain or other tissues. Like other lipid mediators (e.g. prostaglandins) they appear to be synthesized and released locally on demand (see below). Anandamide and the other endogenous cannabinoids are rapidly inactivated by a combination of a transporter mechanism and by the enzyme fatty acid amide hydrolase (FAAH) (Di Marzo *et al.*, 1994; Piomelli *et al.*, 1998; Giuffrida *et al.*, 2001). Genetically engineered mice lacking FAAH displayed elevated levels of anandamide in brain and were supersensitive to the biological actions of anandamide (Cravatt *et al.*, 2001). The discovery of agents that could interfere with the inactivation of endogenous cannabinoids may provide a novel means of pharmaco-



**Fig. 3** Distribution of cannabinoid  $CB_1$  receptors in rat brain revealed by an autoradiograph of the binding of radioactively labeled CP-55940 (a high affinity agonist ligand) to a sagittal brain section. The brain regions labelled are: Cb = cerebellum; CbN = deep cerebellar nucleus; cc = corpus callosum; EP = entopeduncular nucleus; fi = fimbria hippocampus; Fr = frontal cortex; FrPaM = frontoparietal cortex motor area; GP = globus pallidus; Hi = hippocampus; IC = inferior colliculus; LP = lateral posterior thalamus; Me = medial amygdaloid nucleus; PO = primary olfactory cortex; PCRt = parvocellular reticular nucleus; SNR = substantia nigra reticulata; Tu = olfactory tubercle; VP = ventroposterior thalamus. Photograph kindly supplied by Dr Miles Herkenham, National Institute of Mental Health, USA.

logically modifying cannabinoid function in the brain (Piomelli *et al.*, 2000).

### **Neuroanatomical distribution of $CB_1$ receptors in brain**

The distribution of cannabinoid receptors was first mapped in rat brain in autoradiographic studies, using the radioligand [ $H^3$ ]CP-55,940, which binds with high affinity to  $CB_1$  sites (Herkenham *et al.*, 1991) (Fig. 3). The validity of using this radioligand was confirmed by autoradiographic studies in  $CB_1$  receptor knockout mice, in which no detectable [ $H^3$ ]CP-55,940 binding sites were observed (Zimmer *et al.*, 1999). More recently, antibodies that target the C- or N-terminal regions of the  $CB_1$  receptor protein have been used for immunohistochemical mapping studies (Egertová *et al.*, 1998; Pettit *et al.*, 1998; Egertová and Elphick, 2000). Immunohistochemistry provides a superior degree of spatial resolution to autoradiography, but the overall pattern of distribution of  $CB_1$  receptors revealed by the two approaches is very similar (Elphick and Egertová, 2001).

The mapping studies in rat brain showed that  $CB_1$  receptors are mainly localized to axons and nerve terminals and are largely absent from the neuronal soma or dendrites. The finding that cannabinoid receptors are predominantly pre-synaptic rather than postsynaptic is consistent with the postulated role of cannabinoids in modulating neurotransmitter release (see below).

In both animals and man the cerebral cortex, particularly frontal regions, contains high densities of  $CB_1$  receptors.

There are also very high densities in the basal ganglia and in the cerebellum (Fig. 3). In the limbic forebrain  $CB_1$  receptors are found particularly in the hypothalamus and in the anterior cingulate cortex. The hippocampus also contains a high density of  $CB_1$  receptors. The relative absence of the cannabinoid receptors from brainstem nuclei may account for the low toxicity of cannabinoids when given in overdose.

The regional distribution of the  $CB_1$  receptor in brain correlates only poorly with the levels of anandamide and other endocannabinoids in different brain regions (Felder *et al.*, 1996; Bisogno *et al.*, 1999). However, measurements of endocannabinoids have yielded variable results, and a strict correlation would not be expected for ligands that are only produced on demand. There is a better correlation between the regional distribution of  $CB_1$  receptors and the enzyme FAAH. FAAH is widely distributed in CNS and other tissues, suggesting that its role is not confined to inactivating endogenous cannabinoids. Nevertheless, particularly high levels of FAAH were found in brain regions that are enriched in  $CB_1$  receptors, and immunohistochemical staining suggested a complementary relationship between FAAH and  $CB_1$  receptors at the synaptic level (Egertová *et al.*, 1998; Elphick and Egertová, 2001). In cerebellum, hippocampus and neocortex FAAH was expressed at high levels in the somato-dendritic regions of neurons that were postsynaptic to  $CB_1$ -positive axon terminals. The close and complementary relationship between  $CB_1$  receptors and FAAH led to the hypothesis that FAAH may participate in the inactivation of endogenous cannabinoids released locally at synapses

(Elphick and Egertová, 2001). These authors postulated a retrograde cannabinoid signalling mechanism, whereby endogenous cannabinoids are released in response to synaptic activation, feedback to presynaptic receptors on these axon terminals, and are subsequently inactivated by FAAH after their uptake into the postsynaptic compartment. This hypothesis has been supported independently by neurophysiological findings, as described below.

## Effects of cannabinoids on synaptic function

### *Inhibition of neurotransmitter release*

The presynaptic localization of CB<sub>1</sub> receptors suggests a role for cannabinoids in modulating the release of neurotransmitters from axon terminals, and this has been confirmed by a substantial body of experimental data. Early reports (Gill *et al.*, 1970; Roth, 1978) showed that THC inhibited acetylcholine release from electrically stimulated guinea pig ileum. Similar inhibitory effects of THC and other cannabinoids on the release of a variety of neurotransmitters from CNS neurons have been observed in many subsequent studies (Schlicker and Kathmann, 2001). The neurotransmitters involved include L-glutamate, GABA, noradrenaline, dopamine, 5-HT and acetylcholine. The brain regions most often studied *in vitro*, usually in tissue slice preparations, have been cerebellum, hippocampus or neocortex. Neurotransmitter release has been studied directly in superfused preparations, and indirectly by measuring postsynaptic currents. Although most of these studies involved rat or mouse brain, a few studies have shown similar results using human brain tissue (Katona *et al.*, 2000; Schlicker and Kathmann, 2001). Because THC is only poorly water soluble, the more soluble synthetic CB<sub>1</sub> receptor agonists WIN552123, HU210 or CP55-2940 were used in these *in vitro* studies. The specificity of the cannabinoid effects were confirmed by demonstrating that the inhibitory effects of the agonists were completely blocked by the CB<sub>1</sub>-selective antagonist rimonabant.

The cellular mechanisms involved in the inhibition of neurotransmitter release by cannabinoids remain unclear. Some have suggested that there is a direct inhibitory effect of CB<sub>1</sub> receptor activation on N-type Ca<sup>2+</sup> currents (Caulfield and Brown, 1992; MacKie and Hill, 1992). However, the effect appears more likely to involve sites downstream of voltage-dependent Ca<sup>2+</sup> channels, since a number of studies have shown that cannabinoids reduce the frequencies of miniature excitatory or inhibitory synaptic currents, which are Ca<sup>2+</sup> independent, rather than altering their amplitude, which is Ca<sup>2+</sup> sensitive (Schlicker and Kathmann, 2001). Deadwyler *et al.* (1995) suggested that the inhibitory effect of CB<sub>1</sub> receptor activation on adenylate cyclase activity causes a decreased phosphorylation of A-type K<sup>+</sup> channels by the cAMP-dependent enzyme protein kinase A. This, in turn, would activate the A-type K<sup>+</sup> channels and cause a shortening

of the duration of presynaptic action potentials as they invade axon terminals.

### *Biosynthesis of endocannabinoids*

Despite their similar chemical structures, the endocannabinoids are produced through distinct biochemical pathways. The formation of anandamide is thought to result from the hydrolysis of the precursor *N*-arachidonoyl phosphatidylethanolamine, catalysed by the phosphodiesterase enzyme phospholipase D (Di Marzo *et al.*, 1994; Cadas *et al.*, 1997). 2-AG, on the other hand, is produced by cleavage of an inositol-1,2-diacylglycerol, catalysed by phospholipase C. Although both anandamide and 2-AG can activate CB<sub>1</sub> receptors, it is not clear whether both function as endocannabinoids, and whether their synthesis and release are independently controlled. The levels of 2-AG found in brain (2–10 nmol/g) are 50–1000 times higher than those of anandamide (10–50 pmol/g). There is some evidence for separate control of their biosynthesis. Stimulation of glutamate release from Schaffer collaterals in rat hippocampal slices increased levels of 2-AG, but not anandamide (Stella *et al.*, 1997). On the other hand, another study using *in vivo* microdialysis probes showed that local administration of the dopamine D2 receptor agonist quinpirole caused an increased release of anandamide from rat striatum without affecting levels of 2-AG (Giuffrida *et al.*, 1999). Indeed, despite the much higher tissue levels of 2-AG relative to anandamide and the availability of a very sensitive assay, no 2-AG could be detected at all in the striatal dialysate samples. In cultured rat cortical neurons activation of Ca<sup>2+</sup> influx by stimulation of glutamate *N*-methyl-D-aspartate (NMDA) receptors caused an increase in 2-AG formation but not anandamide (Stella and Piomelli, 2001). However, if NMDA activation was combined with a cholinergic agonist (carbachol) the formation of both endocannabinoids was increased. In both cases Ca<sup>2+</sup> influx was required for endocannabinoid synthesis. It is clear that much remains to be learned about the relative roles played by the different endocannabinoids. The biosynthesis of the most recently discovered third endocannabinoid, 2-arachidonylglyceryl ether, remains to be characterized.

### *Endogenous cannabinoids act as retrograde signal molecules at synapses*

Important new insights into the physiological role of cannabinoids has emerged from neurophysiological studies published independently by three different research groups in 2001. A phenomenon known as depolarization-induced suppression of inhibition (DSI) has been known to neurophysiologists for some years (Alger and Pitler, 1995). It is a form of fast retrograde signalling from postsynaptic neurons back to inhibitory cells that innervate them, and is particularly prominent in the hippocampus and cerebellum. Three prop-

erties of DSI suggested to Wilson and Nicoll (2001) that a cannabinoid mechanism might be involved. First DSI, like endocannabinoid synthesis, requires  $\text{Ca}^{2+}$  influx into the postsynaptic neuron (Lenz *et al.*, 1998). Secondly, DSI is probably presynaptic, since the sensitivity of the postsynaptic cell to GABA is unaffected (Pitler and Alger, 1992). Finally, DSI is blocked by pertussin toxin, which interacts with the Gi-proteins negatively linked to adenylate cyclase or to inositol phosphates (Gi/o) protein to which the CB<sub>1</sub> receptor is coupled (Pitler and Alger, 1994). Wilson and Nicoll (2001) used slice preparations of rat hippocampus and induced DSI by brief depolarizing steps in the holding potential of voltage clamped CA1 pyramidal neurons. They found that DSI was completely blocked by the cannabinoid CB<sub>1</sub> receptor antagonists AM251 or rimonabant and could be mimicked by application of the CB<sub>1</sub> receptor agonist WIN55,2122, but the continued presence of the agonist prevented DSI by occlusion. Wilson and Nicoll (2001) were also able to show by recording from pairs of nearby CA1 neurons that depolarizing one of these neurons caused DSI to spread and affect adjacent neurons up to 20  $\mu\text{m}$  away. They suggested that the small, lipid-soluble, freely diffusible endocannabinoids act as retrograde synaptic signals that can affect axon terminals in sphere of influence some 40  $\mu\text{m}$  in diameter.

Ohno-Shosaku *et al.* (2001) came to a similar conclusion using a different experimental paradigm. They recorded from pairs of cultured hippocampal neurons with inhibitory synaptic connections. They found that depolarization of the postsynaptic neurons lead to DSI in approximately two-thirds of the neuron pairs, and showed that this was due to inhibition of GABA release. Those that exhibited DSI, but not the others, proved to be sensitive to the CB<sub>1</sub> receptor agonist WIN55,2122, which mimicked the inhibitory effect of DSI. Both DSI and the cannabinoid effect could be blocked by the CB<sub>1</sub> receptor antagonists AM-281 or rimonabant.

Further support for the conclusion that a cannabinoid-mediated mechanism underlies DSI came from Varma *et al.* (2001), who found that DSI was completely absent in hippocampal slices prepared from CB<sub>1</sub> receptor knockout mice (Ledent *et al.*, 1999). Varma *et al.* (2001) also reported that agonists which stimulate metabotropic glutamate (mGlu) receptors enhanced DSI, whereas the broad-spectrum antagonist of mGlu receptors, LY341495, tended to reduce DSI, suggesting that glutamate may also be involved. Interestingly, Varma *et al.* (2001) found that mGlu agonists failed to have any effect on DSI in the CB<sub>1</sub> knockout animals, suggesting that glutamate acts to enhance the endocannabinoid signal.

Retrograde signalling by endocannabinoids is not restricted to the inhibitory inputs to postsynaptic neurons. Kreitzer and Regehr (2001a) showed that depolarization of rat cerebellar Purkinje cells leads to a transient inhibition of excitatory inputs from parallel fibre and climbing fibre inputs, a phenomenon described as depolarization-induced suppression of excitation (DSE). They found that DSE was triggered by  $\text{Ca}^{2+}$  influx into the Purkinje cells, and could be completely blocked by the CB<sub>1</sub> antagonist AM-251, and mimicked and

occluded by the CB<sub>1</sub> receptor agonist WIN55,2122. Kreitzer and Regehr (2001b) went on to show that inhibitory inputs to rat cerebellar Purkinje cells from basket cells and stellate cells were subject to DSI, and that this was also blocked by AM-251 and occluded by WIN55,2122. The DSE phenomenon in the cerebellum is also linked to mGlu receptors. Maejima *et al.* (2001) reported that mGlu agonists acting on mouse Purkinje cells mimicked DSE, and the effects could be blocked by CB<sub>1</sub> antagonists.

These findings suggest that endocannabinoids are involved in the rapid modulation of synaptic transmission in CNS by a retrograde signalling system that can influence synapses in a local region of some 40  $\mu\text{m}$  diameter, causing inhibitory effects on both excitatory and inhibitory neurotransmitter release that persist for tens of seconds. This may play an important role in the control of neural circuits, particularly in cerebellum and hippocampus (see below). Exogenously administered THC or other cannabinoids cannot mimic the physiological effects of locally released endocannabinoids. Since they cause long-lasting activation of CB<sub>1</sub> receptors in all brain regions, their overall effect is to cause a persistent inhibition of neurotransmitter release from those nerve terminals that express CB<sub>1</sub> receptors, and as a consequence they temporarily occlude and prevent the phenomena of DSI and DSE.

## Effects of cannabinoids on CNS function

### *Psychomotor control*

CB<sub>1</sub> receptors are expressed at particularly high densities in the basal ganglia and cerebellum, so it is not surprising that cannabinoids have complex effects on psychomotor function (reviewed by Rodríguez de Fonseca *et al.*, 1998). One of the earliest reports of the effects of cannabis extracts in experimental animals described the awkward swaying and rolling gait caused by the drug in dogs, with periods of intense activity provoked by tactile or auditory stimuli, and followed eventually by catalepsy and sleep (Dixon, 1899). In rodents cannabinoids tend to have a triphasic effect. Thus in rats low doses of THC (0.2 mg/kg) decreased locomotor activity, while higher doses (1–2 mg/kg) stimulated movements, and catalepsy emerged at doses of 2.5 mg/kg (Sañudo-Peña *et al.*, 2000). Similarly in mice, Adams and Martin (1996) described a ‘popcorn effect’ in animals treated with THC. Groups of mice are sedated by the drug, but will jump in response to auditory or tactile stimuli, as they fall into other animals these in turn jump, resembling corn popping in a popcorn machine. Interestingly, the CB<sub>1</sub> receptor antagonist rimonabant stimulated locomotor activity in mice, suggesting that there is tonic activity in the endocannabinoid system that contributes to the control of spontaneous levels of activity (Compton *et al.*, 1996).

These effects of cannabinoids may be due, in part, to actions at cerebellar or striatal receptors. Patel and Hillard (2001) used tests of specific cerebellar functions to show that

cannabinoids caused increased gait width and the number of slips on a bar cross test. DeSanty and Dar (2001) observed rotorod impairments in mice after direct injection of synthetic cannabinoids into the cerebellum. These defects were no longer seen in animals pretreated with cerebellar injections of an antisense oligonucleotide directed to a sequence in the CB<sub>1</sub> receptor.

In human subjects it is also possible to demonstrate that cannabis causes impaired performance in test of balance (Greenberg *et al.*, 1994), or in tests that require fine psychomotor control, for example tracking a moving point of light on a screen (Manno *et al.*, 1970). Human cannabis users may also seek isolation and remain immobile for long periods.

A number of authors have attempted to combine what is known of the neuroanatomical distribution of the cannabinoid system and the results of behavioural and electrophysiological studies to speculate on the mechanisms underlying cannabinoid modulation of psychomotor function (Breivogel and Childers, 1998; Sañudo-Peña *et al.*, 1999; Giuffrida *et al.*, 2000; Elphick and Egertová, 2001). The CB<sub>1</sub> receptor is expressed particularly by striatal GABAergic medium-spiny projection neurons, and is abundant in regions containing the axon terminals of these cells (globus pallidus, entopeduncular nucleus and substantia nigra reticulata, and in axon collaterals feeding back to medium-spiny projection neurons in striatum). CB<sub>1</sub> receptors are also abundant on the terminals of glutamatergic projection neurons from the subthalamic nucleus to globus pallidus, entopeduncular nucleus and substantia nigra reticulata. Cannabinoids might thus be expected to inhibit GABA release in striatum and GABA and glutamate release in the other nuclei. Sañudo-Peña *et al.* (1999) suggested that the primary role of the endocannabinoid system may be to inhibit tonic release of glutamate in the substantia nigra, regulating levels of basal motor activity. Exogenous cannabinoids also lead to decreased GABA release in substantia nigra, which could lead to a disinhibition of the inhibitory nigral input to the thalamocortical pathway, resulting in inhibition of movement. To what extent the effects of cannabinoids on motor function are due to actions in the cerebellum remains unclear, although as described above it is likely that effects on posture and balance are mediated in this brain region. As described previously, CB<sub>1</sub> receptors are known to occur abundantly on nearly all of the principal excitatory (glutamatergic) and inhibitory (GABAergic) inputs to cerebellar Purkinje cells.

The results of eliminating the expression of CB<sub>1</sub> receptors in knockout mice have yielded conflicting results. The knockout animals studied by Zimmer *et al.* (1999) displayed reduced levels of basal activity, in support of the hypothesis put forward by Sañudo-Peña *et al.* (1999), suggesting that tonic activation of CB<sub>1</sub> receptors promotes movement. However, the CB<sub>1</sub> knockout animals studied by Ledent *et al.* (1999) showed no change in spontaneous activity, and in

some tests they exhibited increased motor activity. This is in line also with the observations of Compton *et al.* (1996) that the CB<sub>1</sub> antagonist SR141716 caused an increase in locomotor activity. The reasons for the discrepant findings in different strains of CB<sub>1</sub> knockout mice are unknown. Clearly, there is as yet only a poor understanding of the actions of cannabinoids in the basal ganglia and cerebellum. Interactions with other chemical signalling systems in the brain are likely to be important. Giuffrida *et al.* (1999) showed, for example, that dopamine D2 receptor agonists caused an increase in anandamide synthesis and release in striatum. Deadwyler *et al.* (1995) described the convergence of multiple presynaptic controls on the terminals of granule cells in cerebellum. In addition to the CB<sub>1</sub> receptor, these terminals also express high densities of kappa opioid, adenosine A<sub>1</sub> and GABA-B receptors, all of which are coupled through a similar Gi/o type G-protein to inhibit adenylate cyclase and are capable of inhibiting glutamate release. Such complexities are likely to prove the norm.

There is anecdotal evidence that cannabis can relieve muscle pain and spasticity in patients suffering from multiple sclerosis (Consroe *et al.*, 1996). Experimental data obtained by Baker *et al.* (2000) in an animal model of multiple sclerosis appears to support such claims. Mice immunized with myelin antigens develop spasticity and tremor. Both symptoms were ameliorated by administration of cannabinoids, and the symptoms were exacerbated by rimonabant, suggesting the involvement of CB<sub>1</sub> receptors and tonic activity in the endocannabinoid system. Controlled clinical trials of cannabis-based medicines for the treatment of multiple sclerosis are currently under way.

### ***Cannabinoid mechanisms in the hippocampus and effects on memory***

One of the well established effects of acute intoxication with cannabis in man is an impairment of short-term memory (the extensive literature on human studies is reviewed by Jones, 1978; Miller and Branconnier, 1983; Solowij, 1998; Earleywine, 2002). Many studies have shown significant effects on short-term memory, particularly when tests were used that depend heavily on attention (Abel, 1971; Mendelson *et al.*, 1976). Animal studies have also found that THC, synthetic cannabinoids and anandamide cause deficits in short-term memory in spatial learning tasks (for a review see Hampson and Deadwyler, 1999). These include delayed matching or non-matching tests in rodents (Mallet and Beninger, 1998; Hampson and Deadwyler, 1999), performance in a radial arm maze (Stiglick and Kalant, 1985; Lichtman and Martin, 1996), and a fixed ratio food acquisition task in squirrel monkeys (Nakamura-Palacios *et al.*, 2000). The effects of both cannabinoids (Lichtman and Martin, 1996) and anandamide (Mallet and Beninger, 1998) were reversed by rimonabant, indicating that they are mediated by the CB<sub>1</sub> receptor.

A probable site for these effects is the hippocampus. Hampson and Deadwyler (1999) claimed that the effects of the treatment of rats with cannabinoids on short-term memory in a delayed non-matching to sample test were equivalent to the effects seen after surgical removal of the hippocampus. In each case the animals were unable to segregate information between trials in the task because of disruptions to the processing of sensory information in hippocampal circuits. CB<sub>1</sub> receptors are expressed at high densities in the hippocampus. They are particularly abundant on the terminals of a sub-set of GABAergic basket cell interneurons, which also contain the neuropeptide cholecystokinin (Katona *et al.*, 1999), and this is also the case in human hippocampus (Katona *et al.*, 2000). These are presumably the GABAergic neurons involved in the endocannabinoid-mediated DSI phenomenon described above. The terminals of these cells surround large pyramidal neuron somata in the CA1–CA4 fields. GABAergic neurons in the dentate gyrus also express CB<sub>1</sub> receptors, with terminals concentrated at the boundary of the molecular and granule cell layers (Egertová and Elphick, 2000). In addition CB<sub>1</sub> receptors are expressed, at a lower level, in the glutamatergic pyramidal cells and their terminals. Cannabinoids can thus inhibit both the release of GABA and glutamate in hippocampal circuits.

The mechanisms underlying synaptic plasticity have been studied more intensely in the hippocampus than in any other brain region. In particular, the electrophysiological phenomena of long-term potentiation (LTP) and long-term depression (LTD) are thought to be involved in memory formation at glutamatergic synapses in the hippocampus. A number of studies have shown clearly that cannabinoids inhibit the induction of both LTP and LTD (for review see Elphick and Egertová, 2001). Cannabinoids appear to work by reducing glutamate release below the level needed to activate NMDA receptors, a requirement for LTP and LTD (Shen *et al.*, 1996; Misner and Sullivan, 1999). Although the actions of cannabinoids in reducing GABA release from hippocampal interneurons might have been expected to increase the level of excitability of hippocampal pyramidal cells, it seems that the cannabinoid-induced reduction in glutamate release predominates. The administration of exogenous cannabinoids is, of course, wholly unphysiological and cannot mimic the effects of endocannabinoids that are released in discrete local regions in response to particular patterns of afferent inputs. CB<sub>1</sub> receptors are capable of regulating both inhibitory and excitatory neurotransmitter release in the hippocampus and are thus capable of subtle control of synaptic plasticity. The CB<sub>1</sub>-containing GABAergic interneurons are thought to control oscillatory electrical activity in the hippocampus in the theta and gamma frequencies, which plays a role in synchronizing pyramidal cell activity (Hoffman and Lupica, 2000). CB<sub>1</sub> agonists decrease the power of such oscillations in hippocampal slices (Hájos *et al.*, 2000) and may thus influence the synchronous activity of pyramidal cells. The physiological importance of cannabinoid-mediated DSI may be to decrease GABAergic inhibition of these cells and thus facilitate

learning when hippocampal inputs are active (Wilson and Nicoll, 2001).

One approach to answering the question of what role the tonic release of endocannabinoids may play in hippocampal function has been to examine the effects of CB<sub>1</sub> receptor knockout or of selective CB<sub>1</sub> receptor antagonists. Unfortunately, these studies have so far yielded conflicting results. Bohme *et al.* (2000) reported a significant enhancement of LTP in CB<sub>1</sub> knockout mice, and Reibaud *et al.* (1999) found a significant enhancement of memory in such animals. However, tests with the CB<sub>1</sub> antagonist rimonabant showed no effects on LTP (Terranova *et al.*, 1995) or on learning and memory in a spatial learning task (Mallet and Beninger, 1998), although Terranova *et al.* (1996) reported that rimonabant enhanced memory in a short-term olfactory memory test in rats (social recognition test).

### ***Cannabinoids and the neocortex***

Like other intoxicant drugs cannabis causes profound changes in a variety of higher brain functions. The literature on the acute effects of the drug in human subjects is large, and can only be summarized here (for reviews see Jones, 1978; Solowij, 1998; Iversen, 2000; Earleywine, 2002). The distribution of CB<sub>1</sub> receptors in the neocortex has been described in detail (Herkenham *et al.*, 1991; Egertová and Elphick, 2000). As in the hippocampus, the majority of cortical interneurons expressing high levels of CB<sub>1</sub> receptor are GABAergic cells, which also express cholecystokinin (Marsicano and Lutz, 1999). CB<sub>1</sub>-positive terminals are concentrated in layers II–III and layers V–VI, with few in layers I or IV. Despite the obvious importance of the abundant CB<sub>1</sub> receptors in the neocortex there have so far been few electrophysiological studies of their effects on neural activity.

The earlier literature, however, contains several reports of the effects of acute and chronic cannabis use on EEG activity, both in man and animals (reviewed by Adams and Martin, 1996; Solowij, 1998). Most studies in man have observed changes consistent with a state of drowsiness, with increases in relative and absolute  $\alpha$  power particularly in frontal regions of cortex. In contrast, the CB<sub>1</sub> antagonist rimonabant was shown to induce EEG changes characteristic of arousal in rats, and increased the time spent in wakefulness as opposed to sleep (Santucci *et al.*, 1996). Mechoulam *et al.* (1997) have suggested that anandamide may play a role in the control of the sleep–waking cycle.

Studies of the effects of cannabis on perceptual abilities have yielded a variety of often conflicting results. While users often report a subjective enhancement of visual and auditory perception, sometimes with synesthesia (sounds take on visual colourful qualities), laboratory studies have usually not shown marked changes in visual or auditory perception. One subjective effect that has been confirmed is the sensation that cannabis users experience time as passing more quickly relative to real time. In laboratory tests subjects overestimate

the amount of elapsed time when asked to estimate, or produce shorter than required intervals when asked to signal a period of elapsed time (Hicks *et al.*, 1984; Mathew *et al.*, 1998). This curious effect can also be seen in rats trained to respond for food reward using a fixed interval schedule. When treated with THC or WIN55,2122 the animals shortened their response interval, whereas the antagonist rimonabant lengthened this interval (Han and Robinson, 2001).

There have been many studies of the acute and chronic effects of cannabis on human cognitive function (Jones, 1978; Solowij, 1998; Earleywine, 2002). Performance on a variety of tests of cognitive function is impaired by the drug, but by comparison with alcohol the effects of cannabis are subtle. Whereas even moderate doses of alcohol, for example, impair reaction time, most studies with cannabis have failed to show consistent effects on measures of simple reaction time. Thus the drug's ability to disrupt cognitive function cannot be due to an inability to respond promptly. Among the impairments of cognitive function that have been observed in many, but not all, human studies are: decreased ability to inhibit responses, decreased vigilance, especially for long and boring tasks, decreased ability to perform complex mental arithmetic and impairments in tests of complex reaction times. On the other hand, intoxicated subjects can perform simple arithmetic, learn simple lists of words and recall memories laid down earlier.

Other studies have addressed the question of whether more severe deficits in cognitive function might develop in chronic heavy users of cannabis, or in animals treated for prolonged periods with the drug. The human studies are fraught with difficulties, as described in detail by Earleywine (2002). Among the confounding factors in human studies are that comparisons have to be made between groups of drug users versus non-users, but it is usually impossible to compare the baseline performance of these groups prior to cannabis use to see if they are properly matched. Statistical analysis of such data has often been poor, common errors being the use of so many different tests that the likelihood of finding some significant differences is increased, or the use of inadequate sample sizes. Other drug use can also confound the data. Results have been very variable. Some studies in long-term very heavy users of cannabis (10–20 joints per day for more than 10 years) in Jamaica (Bowman and Pihl, 1973) and Costa Rica (Satz *et al.*, 1976) failed to show any significant difference between users versus non-users using a battery of test assessments of cognitive function, and similar negative results were reported in some studies of US college students (Earleywine, 2002). However, most reports have shown that there are deficits in the performance of complex cognitive tasks in long-term cannabis users, although there is little evidence that these are qualitatively or quantitatively more severe than those seen after acute use of the drug (Earleywine, 2002).

Even more controversial is the question of whether long-term cannabis use can cause irreversible deficits in higher brain function that persists after drug use stops. Many studies have suffered from poor design. It is not sufficient to identify a group

of cannabis users and simply to test them after stopping cannabis use. Pope *et al.* (2001), for example, recruited 63 current heavy users, who had smoked cannabis at least 5000 times in their lives, and 72 control subjects. Subjects underwent a 28-day washout from cannabis use, monitored by urine assays. At days 0, 1 and 7 the heavy users scored significantly below control subjects on a battery of neuropsychological tests, particularly in recall of word lists. However, by day 28 there were virtually no differences between the groups on any of the test results, and no significant association between cumulative lifetime cannabis use and test scores. The fact that drug-induced effects on cognitive performance can persist for up to a week after stopping the drug (perhaps because of the persistence of THC in the body, or because of a subtle withdrawal syndrome) means that many earlier studies that did not allow a sufficiently long washout period may be invalid. On the other hand, some well designed studies have shown subtle persistent cognitive deficits in ex-cannabis users. Solowij (1998) recruited a group of people who had used cannabis regularly for at least 5 years but who had stopped on average 2 years before the experiment. The subjects were given a very difficult task. They had to listen to a series of tones, some in the right ear some in the left; the tones were long or short (but differing by only 51 ms) and high or low pitch (but differing very little). Participants had to press a button as fast as possible in response to longer tones of a specified pitch in the correct ear. Previous research using this paradigm showed that current regular cannabis users had difficulty in discriminating between the tones. Measurements of event-related potentials also revealed small but significant abnormalities in the P300 wave (Solowij, 1998). The ex-users continued to make significant errors in the discrimination task, but they showed normal P300 waves. The conclusion of these and many other studies in ex-users seems to be that regular cannabis use can cause small but significant impairments in cognitive function that may persist after drug use stops. Such impairments appear to be associated with long-term heavy use of the drug and are unlikely to affect most recreational users.

### ***Effects of cannabinoids on hypothalamic control of appetite***

Many subjective reports suggest that cannabis intoxication is associated with an increased appetite, particularly for sweet foods, even in subjects who were previously satiated. This effect can be confirmed under laboratory conditions (Hollister, 1971; Mattes *et al.*, 1994), although results from studies in human subjects have tended to be variable, perhaps because the increased appetite is focused on certain types of food. Nevertheless, controlled clinical trials showed that THC (dronabinol) had significant beneficial effects in counteracting the loss of appetite and reduction in body weight in patients suffering from the AIDS-related wasting syndrome (Beal *et al.*, 1995), and this is one of the medical indications for which the drug has official approval in the USA.



THC also stimulates food intake in experimental animals, and again the effect is specific for high-fat or sweet high-fat diets, and is not seen in animals offered standard rat chow (Koch, 2001). The endocannabinoid anandamide also stimulates food intake in rats, and the effect is blocked by rimonabant (Williams and Kirkham, 1999). Conversely the CB<sub>1</sub> antagonist rimonabant given on its own suppressed food intake and led to reduced body weight in adult non-obese rats (Colombo *et al.*, 1998). These results suggest that cannabinoids may play a role in the regulation of food intake and body weight (Mechoulam and Fride, 2001). A possible reciprocal link between endocannabinoid mechanisms and the appetite-suppressing hormone leptin was suggested by Di Marzo *et al.* (2001a). They found that food-deprived CB<sub>1</sub> receptor knockout mice eat less than their wild-type litter mates, and the CB<sub>1</sub> antagonist rimonabant reduced food intake in the wild-type animals but not in the knockouts. Animals with defective leptin signalling (obese db/db or ob/ob mice and Zucker rats) exhibited elevated hypothalamic levels of anandamide and 2-AG. On the other hand, treatment of normal rats or ob/ob (leptin deficient) mice with leptin caused decreases in hypothalamic levels of the endocannabinoids. These findings suggest that hypothalamic endocannabinoids may play an important role in mediating the appetite-suppressant effects of leptin. At some stages during development these effects of endocannabinoids may be of critical importance. Fride *et al.* (2001) found that administration of the CB<sub>1</sub> antagonist rimonabant to new-born mouse pups had a devastating effect in decreasing milk ingestion and growth, continuing treatment with the antagonist led to death within 4–8 days. The effect of rimonabant could be almost fully reversed by co-administering THC.

### **Cannabinoids as anti-emetic agents**

The ability of THC and the synthetic cannabinoid nabilone to control the nausea and vomiting associated with cancer chemotherapy is one of the few well documented medical applications for these drugs (for reviews of the controlled clinical trials see Vincent *et al.*, 1983; British Medical Association, 1997; Joy *et al.*, 1999; and the meta-analysis reported by Tramèr *et al.*, 2001). THC (dronabinol) and nabilone were approved for medical use in the USA, although neither drug has found much utility. The narrow window between the anti-emetic dose and that causing unwanted psychic effects made these drugs difficult to use. The advent of serotonin 5-HT<sub>3</sub> receptor antagonists as new and more powerful anti-emetic drugs that were free of unwanted psychic effects during the 1980s also made the cannabinoids less attractive.

Studies in experimental animals have confirmed that the anti-emetic effects of cannabinoids are mediated through CB<sub>1</sub> receptors (Darmani, 2002), and in some susceptible species (e.g. the least shrew) the CB<sub>1</sub> antagonist rimonabant is emetic, an effect that can be blocked by THC or WIN55,2122 (Darmani, 2001).

### **Cannabinoids and pain**

Cannabis was widely used in 19th century medicine for pain relief and there is renewed interest in cannabis-based medicines, with pain as one of the key therapeutic targets (British Medical Association, 1997; Joy *et al.*, 1999). Endogenous cannabinoids and cannabinoid receptors exist at various levels in the pain pathways, from peripheral sensory nerve endings to spinal cord and supraspinal centres, in a system that is parallel to but distinct from that involving endorphins and opiate receptors.

Systemically administered THC and synthetic cannabinoids have anti-nociceptive and anti-hyperalgesic effects in a variety of animal models of acute and inflammatory pain (for reviews see Pertwee, 2001; Iversen and Chapman, 2002). Since cannabinoids inhibit motor activity this could prevent animals from exhibiting the normal behavioural reactions in analgesic tests; however, a number of studies have also shown that cannabinoids suppress electrophysiological responses of spinal cord neurons to noxious stimulation, and block spinal c-fos expression in response to such stimulation (Walker *et al.*, 1999; Pertwee, 2001; Iversen and Chapman, 2002). Cannabinoids and anandamide also exert anti-nociceptive effects in animal models of inflammatory pain when injected directly into spinal cord, brain stem or thalamus (Pertwee, 2001). Behavioural studies have shown that cannabinoids reduce thermal and mechanical allodynia in rat models of neuropathic pain (Herzberg *et al.*, 1997; Fox *et al.*, 2001; Iversen and Chapman, 2002). Furthermore, noxious stimulation evoked an increased release of anandamide in the periaqueductal grey region of brainstem, a key site for modulating nociceptive information (Walker *et al.*, 1999). The anti-nociceptive effects of cannabinoids are blocked by the CB<sub>1</sub> antagonist rimonabant, but the antagonist itself does not alter basal pain thresholds, suggesting that these are not controlled by tonic activity in the endocannabinoid system (Compton *et al.*, 1996).

Results obtained with CB<sub>1</sub> receptor knockout mice, however, suggest that not all of the anti-nociceptive effects of THC or anandamide are mediated via CB<sub>1</sub> receptors. Thus, although Di Marzo *et al.* (2000) found that the anti-nociceptive effects of THC were virtually absent in the knockout animals, anandamide continued to show analgesic activity in the hot-plate test. It is possible that the analgesic effects of anandamide are mediated in part through an action at other as yet ill-defined cannabinoid receptors (Breivogel *et al.*, 2001; Hájos *et al.*, 2001). Alternatively, it has been proposed that the effects of anandamide might be mediated through its ability to bind to the vanilloid VR1 receptor, which is present in primary afferent neurons and known to play an important role in nociceptive responses (Di Marzo *et al.*, 2001b). To complicate matters further, Zimmer *et al.* (1999), in a different strain of CB<sub>1</sub> receptor knockout mice, found that THC continued to exert some anti-nociceptive actions in hot-plate and formalin tests in the knockout animals. The reasons for the discrepant results obtained

with different strains of CB<sub>1</sub> receptor knockout mice are unknown.

There is evidence for an interaction between cannabinoid and opioid mechanisms. In tests of acute pain (Fuentes *et al.*, 1999) and chronic inflammatory pain (Welch and Stevens, 1992; Smith *et al.*, 1998) THC and morphine acted synergically—one potentiated the anti-nociceptive actions of the other. This potentiation could be blocked by either rimonabant or by naloxone, indicating that both CB<sub>1</sub> and opiate receptors were involved (Fuentes *et al.*, 1999). Meng *et al.* (1998) showed that temporary inactivation of neural activity in the rostral ventromedial medulla (RVM) in rat brainstem prevented the analgesic effects of systemically administered cannabinoids, while leaving their effects on motor activity unaffected. An electrophysiological analysis of the effects of cannabinoids on single cell firing patterns in RVM revealed that the effects of cannabinoids were similar to those elicited by morphine. The authors concluded that cannabinoids may produce analgesia through activation of a brainstem circuit that is also required for opiate analgesia, although the two mechanisms are pharmacologically distinct.

Basic research into the role of cannabinoids and endocannabinoids in pain mechanisms is progressing rapidly. Clinical progress, however, has been slow. A meta-analysis of clinical trials of cannabinoids as analgesics concluded that there was not enough evidence to justify their use in this indication (Campbell *et al.*, 2001). However, this may merely reflect the paucity of data from adequately sized controlled clinical trials, and cannabis-based medicines may yet find genuine medical applications in this field.

## Cannabis as an intoxicant and drug of dependence

### *Cannabis intoxication*

Despite being illegal, cannabis is one of the most widely used intoxicants; almost half of all 18 year olds in the USA and in most European countries admit to having tried it at least once, and ~10% of that age group are regular users (Iversen, 2000). There have been many subjective accounts of the cannabis 'high' (see Iversen, 2000; Earleywine, 2002). The experience is highly variable, depending on the dose of drug, the environment and the experience and expectations of the drug user. A typical 'high' is preceded initially by a transient stage of tingling sensations felt in the body and head accompanied by a feeling of dizziness or lightheadedness. The 'high' is a complex experience, characterized by a quickening of mental associations and a sharpened sense of humour, sometimes described as a state of 'fatuous euphoria'. The user feels relaxed and calm, in a dreamlike state disconnected from real world. The intoxicated subject often has difficulty in carrying on a coherent conversation, and may drift into daydreams and fantasies. Drowsiness and sleep may eventually ensue. The feelings of heightened perception, increased appetite and distortion of the sense of time have already been referred to.

A survey of 1333 young British cannabis users (Atha and Blanchard, 1997) reported that the most common positive benefits reported were relaxation and relief from stress (25.6%), insight/personal development (8.7%) and euphoria (4.9%); more than half reported some positive benefits. But 21% of the users also attributed some adverse effects to cannabis use, including impaired memory (6.1%), paranoia (5.6%) and amotivation/laziness (4.8%).

As with other intoxicant drugs, little is known about the brain mechanisms that underlie the cannabis 'high'. The intoxicant effects are clearly mediated via CB<sub>1</sub> receptors. Huestis *et al.* (2001) carried out a well controlled study in 63 healthy cannabis users, who received either rimonabant or placebo and smoked either a THC-containing or placebo marijuana cigarette. The CB<sub>1</sub> antagonist blocked the acute psychological effects of the active cigarettes. Interestingly rimonabant itself when given alone (with placebo cigarette) produced no significant psychological effects. Mathew *et al.* (1997) used H<sub>2</sub><sup>15</sup>O and PET to measure changes in regional cerebral blood flow in a double blinded study in 32 volunteers comparing THC with placebo. Self ratings of cannabis intoxication correlated most markedly with increased blood flow in the right frontal region.

Endocannabinoids and CB<sub>1</sub> receptors are present in many regions of the limbic forebrain. For example, Katona *et al.* (2001) reported that CB<sub>1</sub> receptors were expressed in high densities in lateral and basal nuclei in the rat amygdala. As in hippocampus, the CB<sub>1</sub> receptors in these regions were located presynaptically on the terminals of cholecystokinin-containing GABAergic interneurons. Electrophysiological experiments showed that cannabinoids modulated GABAergic synaptic transmission. The authors suggested that such effects might underlie some of the actions of cannabinoids on emotional behaviour. Other experiments have revealed that, in common with other euphoriant drugs, THC selectively activates dopaminergic neurons in the ventral tegmental area. In an electrophysiological study French *et al.* (1997) reported that low doses of THC increased the firing of these cells. Tanda *et al.* (1997) used microdialysis probes to show that low doses of THC (0.15 mg/kg intravenously) caused an increased release of dopamine from the shell region of the nucleus accumbens, an effect that is also seen after administration of heroin, cocaine, d-amphetamine and nicotine. Tanda *et al.* (1997) found that the increased release of dopamine provoked by THC could be blocked by administration of the  $\mu$ -opiate receptor antagonist naloxonazine, suggesting the involvement of an opioid mechanism.

### *Tolerance and dependence*

Many animal studies have shown that tolerance develops to most of the behavioural and physiological effects of THC (for review see Pertwee, 1991). The earlier clinical literature suggested that tolerance also occurs after repeated administration of THC in man, although many of these studies were poorly controlled (for reviews see Jones, 1978, 1987;

Hollister, 1986). But for many years cannabis was not considered to be a drug of addiction. Withdrawal of the drug did not lead to any obvious physical withdrawal symptoms either in people or in animals, and animals failed to self-administer the drug, a behaviour usually associated with drugs of addiction.

Attitudes have changed markedly in recent years. The DSM-IV (American Psychiatric Association, 1994) defines 'substance dependence' and 'substance abuse' rather than 'addiction'. When the DSM-IV criteria are applied to populations of regular cannabis users surprisingly high proportions appear to be positive by these definitions. Swift *et al.* (2001) undertook a survey of 10 641 Australians aged 18 years and older. They reported that almost one-third of regular cannabis users fell within the definitions of 'substance abuse' (10.7%) or 'substance dependence' (21%). In the USA, Anthony *et al.* (1994) reported the results obtained from a large scale survey which indicated that some 46% of those interviewed had ever used cannabis and 9% of users became dependent. More carefully controlled studies have also shown that a reliable and clinically significant withdrawal syndrome does occur in human cannabis users when the drug is withdrawn. The symptoms include craving for cannabis, decreased appetite, sleep difficulty and weight loss, and may sometimes be accompanied by anger, aggression, increased irritability, restlessness and strange dreams (Budney *et al.*, 2001).

The existence of dependence on cannabinoids in animals is also much more clearly observable because of the availability of CB<sub>1</sub> receptor antagonist drugs that can be used to precipitate withdrawal. Thus, Aceto *et al.* (1996) described a behavioural withdrawal syndrome precipitated by rimonabant in rats treated for only 4 days with doses of THC as low as 0.5–4.0 mg/kg per day. The syndrome included scratching, face rubbing, licking, wet dog shakes, arched back and ptosis—many of the same signs are seen in rats undergoing opiate withdrawal. Similar withdrawal signs could be elicited by rimonabant in rats treated chronically with the synthetic cannabinoids CP-55,940 (Rubino *et al.*, 1998) or WIN55,2122 (Aceto *et al.*, 2001). Rimonabant-induced withdrawal after 2 weeks of treatment of rats with the cannabinoid HU-120 was accompanied by marked elevations of release of the stress-related neuropeptide corticotropin-releasing factor in the amygdala, a result also seen in animals undergoing heroin withdrawal (Rodríguez de Fonseca *et al.*, 1997). An electrophysiological study showed that precipitated withdrawal was also associated with reduced firing of dopamine neurons in the ventral tegmental area of rat brain (Diana *et al.*, 1998). These data indicate clearly that chronic administration of cannabinoids leads to adaptive changes in the brain, some of which are similar to those seen with other drugs of dependence. The ability of THC to cause a selective release of dopamine from the nucleus accumbens (Tanda *et al.*, 1997) also suggests some similarity between THC and other drugs in this category.

Furthermore, although many earlier attempts to obtain reliable self-administration behaviour with THC were unsuccessful (Pertwee, 1991), some success has been achieved

recently. Squirrel monkeys were trained to self-administer low doses of THC (2 µg/kg per injection), but only after the animals had first been trained to self-administer cocaine (Tanda *et al.*, 2000). THC is difficult to administer intravenously and these authors succeeded perhaps in part because they succeeded in delivering the drug intravenously in doses comparable to those to which human cannabis users are exposed. The potent synthetic cannabinoids are far more water soluble than THC, which makes intravenous administration easier. Mice could be trained to self-administer intravenous WIN55,2122, but CB<sub>1</sub> receptor knockout animals failed to exhibit this behaviour (Ledent *et al.*, 1999). Another way of demonstrating the rewarding effects of drugs in animals is the conditioned place preference paradigm, in which an animal learns to approach an environment in which it had previously received a rewarding stimulus. Rats demonstrated a positive THC place preference after doses as low as 1 mg/kg (Lepore *et al.*, 1995).

A number of studies have suggested that there may be links between the development of dependence to cannabinoids and to opiates (Manzanares *et al.*, 1999). Some of the behavioural signs of rimonabant-induced withdrawal in THC treated rats can be mimicked by administration of the opiate antagonist naloxone (Kaymakçalan *et al.*, 1977). Conversely, the withdrawal syndrome precipitated by naloxone in morphine-dependent mice can be partly relieved by administration of THC (Hine *et al.*, 1975) or by endocannabinoids (Yamaguchi *et al.*, 2001). Rats treated chronically with the cannabinoid WIN55,2122 became sensitized to the behavioural effects of heroin (Pontieri *et al.*, 2001). Such interactions can also be demonstrated acutely. A synergy between cannabinoids and opiate analgesics has already been described above. THC also facilitated the anti-nociceptive effects of RB 101, an inhibitor of enkephalin inactivation (Valverde *et al.*, 2001). These authors found that acute administration of THC caused an increased release of Met-enkephalin into microdialysis probes placed into the rat nucleus accumbens.

The availability of receptor knockout animals has also helped to illustrate cannabinoid–opioid interactions. CB<sub>1</sub> receptor knockout mice exhibited greatly reduced morphine self-administration behaviour and less severe naloxone-induced withdrawal signs than in wild-type animals, although the anti-nociceptive actions of morphine were unaffected in the knockout animals (Ledent *et al.*, 1999). The rimonabant-precipitated withdrawal syndrome in THC-treated mice was significantly attenuated in animals with knockout of the pro-enkephalin gene (Valverde *et al.*, 2000). Knockout of the µ-opioid receptor also reduced rimonabant-induced withdrawal signs in THC-treated mice, and there was an attenuated naloxone withdrawal syndrome in morphine dependent CB<sub>1</sub> knockout mice (Lichtman *et al.*, 2001a, b).

These findings point clearly to interactions between the endogenous cannabinoid and opioid systems in CNS, although the neural circuitry involved remains unknown. Whether this relationship is relevant to the so-called 'gateway' theory is unclear. The US National Household survey of Drug Abuse (US Department of Health and Human Services,

1999) indicated that respondents aged 22 years or older who had started cannabis use before the age of 21 years were 24 times more likely than non-cannabis users to initiate use of hard drugs. But the proportion of cannabis users who progress in this way remains very small (~1% or less), and mathematical modelling using the Monte Carlo method suggested that the association between cannabis use and hard drug use need not be causal but could relate to some common predisposing factor, e.g. 'drug-use propensity' (Morrall *et al.*, 2002).

### Adverse effects of cannabis on the CNS *Is cannabis neurotoxic?*

Although there have been claims that chronic cannabis use may permanently damage the brain, there is little scientific evidence to support these claims (for reviews see Dornbush *et al.*, 1976; Hollister, 1986, 1998; Zimmer and Morgan, 1997). As described above, some studies have revealed a modestly impaired ability to focus attention and filter out irrelevant information in ex-cannabis users (Solowij, 1998), but other studies failed to find any impairments in cognitive function (Pope *et al.*, 2001). There is little evidence that cannabis use impairs work performance or leads to an 'amotivational syndrome' (Dornbush *et al.*, 1976; Hollister, 1986; Abood and Martin, 1992), nor is there any convincing evidence for neuropathological changes in the brains of cannabis users (Hollister, 1986). The earlier studies have been complemented by the application of powerful modern neuroimaging methods. For example, an MRI study compared 18 current, frequent, young adult cannabis users with 13 comparable non-users and found no evidence of cerebral atrophy or regional changes in tissue volumes (Block *et al.*, 2000).

Animal studies have yielded conflicting results. Treatment of rats with high doses of THC given orally for 3 months (Scallet *et al.*, 1987) or subcutaneously for 8 months (Landfield *et al.*, 1988) was reported to lead to neural damage in the hippocampal CA3 zone, with shrunken neurons, reduced synaptic density and loss of cells. However, in another study the potent synthetic cannabinoid WIN55,2122 was administered twice daily (2 mg/kg) to rats and led to an apparent increase in hippocampal granule cell density, and increased dendritic length in the CA3 zone. In perhaps the most severe test of all, rats and mice were treated with THC 5 days each week for 2 years and no histopathological changes were observed in brain, even after 50 mg/kg/day (rats) or 250 mg/kg/day (mice) (Chan *et al.*, 1996). Although claims were made that exposure of a small number of rhesus monkeys to cannabis smoke led to ultrastructural changes in septum and hippocampus (Harper *et al.*, 1977; Heath *et al.*, 1980), subsequent larger scale studies failed to show any cannabis-induced histopathology in monkey brain (Scallet, 1991).

Studies of the effects of cannabinoids on neurons *in vitro* have also yielded inconsistent results. Exposure of rat cortical

neurons to THC was reported to decrease their survival, with twice as many cells dead after 2 h exposure to 5  $\mu$ M THC than in control cultures (Downer *et al.*, 2001). Concentrations of THC as low as 0.1  $\mu$ M had a significant effect. The effects of THC were accompanied by release of cytochrome *c*, activation of caspase-3 and DNA fragmentation, suggesting an apoptotic mechanism. All of the effects of THC could be blocked by the antagonist AM-251 or by pertussis toxin, suggesting that they were mediated through CB<sub>1</sub> receptors. Toxic effects of THC have also been reported on hippocampal neurons in culture, with 50% cell death after 2 h exposure to 10  $\mu$ M THC or after 5 days exposure to 1  $\mu$ M drug (Chan *et al.*, 1998). The antagonist rimonabant blocked these effects, but not pertussis toxin. The authors proposed a toxic mechanism involving arachidonic acid release and formation of free radicals. However, other authors failed to observe any damage in rat cortical neurons exposed for up to 15 days to 1  $\mu$ M THC, although they found that this concentration of THC killed rat C6 glioma cells, or human astrocytoma U373MG and mouse neuroblastoma N18TG12 cells (Sánchez *et al.*, 1998). In a remarkable study injections of THC into solid tumours of C6 glioma in rodent brain led to increased survival times, and a complete eradication of the tumours was evident in 20–35% of the treated animals (Galve-Roperh *et al.*, 2000). The anti-proliferative effects of cannabinoids has suggested a potential utility for such drugs in cancer treatment (Guzmán *et al.*, 2001).

Some studies have reported neuroprotective actions of cannabinoids. Administration of WIN55,2122 was found to reduce cerebral damage in rat hippocampus or cerebral cortex after global ischaemia or focal ischaemia models *in vivo* (Nagayama *et al.*, 1999). The endocannabinoid 2-AG protected against damage elicited by closed head injury in mouse brain, and the protective effects were blocked by rimonabant (Panikashvili *et al.*, 2001). THC had a similar effect *in vivo* in protecting against damage elicited by ouabain (Van der Stelt *et al.*, 2001). Rat hippocampal neurons in tissue culture were protected against glutamate-mediated damage by low concentrations of WIN55,2122 or CP-55,940 and these effects were mediated through CB<sub>1</sub> receptors (Shen and Thayer, 1998). But not all of these effects seem to require mediation via cannabinoid receptors. Nagayama *et al.* (1999) reported protective effects of WIN55,2122 that did not require either cannabinoid receptor in cortical neurons exposed to hypoxia, and similar findings were reported for the protective actions of anandamide and 2-AG in cortical neuron cultures (Sinor *et al.*, 2000). Both THC and cannabidiol, which is not active on cannabinoid receptors, protected rat cortical neurons against glutamate toxicity (Hampson *et al.*, 1998) and these effects, were also independent of CB<sub>1</sub> receptors. The authors suggested that the protective effects of THC in their studies might be due to the antioxidant properties of these polyphenolic molecules, which have redox potentials higher than those of known antioxidants (e.g. ascorbic acid).

The mixed reports of neurotoxic and neuroprotective effects of cannabinoids are confusing. While it may be possible to demonstrate neurotoxic actions after exposure of neurons to high concentrations of cannabinoids *in vitro*, there is little evidence for any significant neural damage *in vivo* after the administration of pharmacologically relevant doses of these drugs.

### ***Cannabis and psychiatric illness***

A temporary form of drug-induced psychosis can occur in some cannabis users. In some of the psychiatric literature this is referred to as 'cannabis psychosis' (or 'marijuana psychosis'). Research psychiatrists, particularly in Britain (Thomas, 1993; Hall and Degenhardt, 2000; Johns, 2001), have studied this condition carefully. It nearly always results from taking large doses of the drug, often in food or drink, and the condition may persist for some time, perhaps as the accumulated body load of THC is washed out. The acute toxic psychosis that is sometimes caused by cannabis can be sufficiently serious to lead to the subject being admitted to hospital, and the initial diagnosis can be confused with schizophrenia, since the patients may display some of the characteristic symptoms of schizophrenic illness. These include delusions of control (being under the control of some outside being or force), grandiose identity, persecution, thought insertion, auditory hallucinations (hearing sounds, usually non-verbal in nature), changed perception and blunting of the emotions. Not all symptoms will be seen in every patient, but there is a considerable similarity to paranoid schizophrenia. This has led some to propose a 'cannabinoid hypothesis of schizophrenia', suggesting that the symptoms of schizophrenic illness might be caused by an abnormal over-activity of endogenous cannabinoid mechanisms in the brain (Emrich *et al.*, 1997).

A number of studies have addressed the more contentious question of whether cannabis use can precipitate long-term psychiatric illness. The strongest evidence seemed to come from a study in Sweden that involved taking detailed medical records and information about the social background and drug-taking habits of 45 570 conscripts on entry to the Swedish army at age 18 years and following up of their subsequent medical history over a 15-year period (Andreasson *et al.*, 1987). A total of 4293 of the conscripts admitted having taken cannabis at least once, but the cannabis users accounted for a disproportionate number of the 246 cases of schizophrenic illness diagnosed in the overall group on follow-up. The relative risk of schizophrenia in those who had used cannabis was 2.4 times greater than in the non-users. In the small number of heavy users (who had taken the drug on more than 50 occasions) the relative risk of schizophrenia increased to 6.0. The authors concluded that cannabis was an independent risk factor for schizophrenia. There have been other similar reports (Mathers and Godse, 1992; Hall and Degenhardt, 2000; Johns, 2001). Hambrecht and Hafner (2000), for example, studied 232 patients in Germany with

first-episode schizophrenia. They found that 13% of these had a history of cannabis use, a rate twice that of matched normal controls. At first viewing these findings seem convincing, but they do not prove any cause-and-effect relationship with cannabis. It may simply be that both cannabis use and schizophrenia are related to some common predisposing factor, such as personality. Indeed some psychologists and psychiatrists believe that they can identify psychological traits that are described as 'schizotypy' and which may predict an increased risk of developing clinical psychosis. Some studies in healthy adults have reported that those subjects who used cannabis scored higher on schizotypy scales than non-users (Williams *et al.*, 1996; Skosnik and Spatz, 2001). Half of the cannabis-using subjects in the original Swedish study had used cannabis more than 10 times and subsequently developed schizophrenia had also taken amphetamine, a drug known to be capable of inducing a schizophrenia-like psychosis. The cannabis users also came from deprived social backgrounds, another known risk factor of schizophrenia. More detailed follow-ups of some of the original Swedish cohort, however, claimed to have answered some of these criticisms (Andreasson *et al.*, 1989; Zammit *et al.*, 2002). In addition, further reports from New Zealand (Arseneault *et al.*, 2002; Fergusson *et al.*, 2003), Australia (Patton *et al.*, 2002) and France (Verdoux *et al.*, 2003) add weight to the hypothesis that the development of cannabis dependence in young people is associated with increased rates of psychiatric symptoms, both of psychosis and depression and anxiety (Patton *et al.*, 2002).

Nevertheless, the existence of a causative relationship between cannabis use and long-term psychotic illness remains unproven. If cannabis use did precipitate schizophrenia one might expect to have seen a large increase in the numbers of sufferers from this illness as cannabis use became more common in the West during the past 30 years. However, a detailed review of the epidemiological evidence up to 1990 appeared to show that this has not been the case (Thornicroft, 1990).

On the other hand, it is clear that cannabis can exacerbate the symptoms of existing psychotic illness. While schizophrenic patients seem to use cannabis and other psychoactive drugs as a form of 'self-medication', cannabis can make the key symptoms of delusions and hallucinations worse and it tends to counteract the anti-psychotic effects of the drugs used to treat the illness (Negrete *et al.*, 1986; Linzen *et al.*, 1994). On the other hand, one Swedish study reported that cannabis use made schizophrenic patients less withdrawn and more likely to speak (Peralta and Cuesta, 1992). It would seem prudent, nevertheless, to discourage the use of cannabis in patients with existing psychotic illness.

### **Conclusion**

The discovery of the endocannabinoids and the availability of new pharmacological tools, together with the development of strains of genetically engineered knockout mice that lack

functional cannabinoid receptors, has revitalized the field of cannabis research in the past few years. The effects of administering THC or other cannabinoids can never simulate the highly localized function of the endocannabinoids, which appear to act as a fine control system to regulate neurotransmitter release at the synaptic level. There has been renewed interest in the potential therapeutic applications of cannabis-based medicines (British Medical Association, 1997; Joy *et al.*, 1999; Robson, 2001). THC or other cannabinoid agonists all suffer from the problem of a narrow therapeutic window between the desired clinical benefits and the unwanted psychic side-effects. It is possible that the pharmacological manipulation of the endocannabinoid system, boosting function, for example by drugs that inhibited the inactivation of the endocannabinoids, may offer a safer and more subtle approach to cannabis-based medicines in the future (Piomelli *et al.*, 2000).

## References

- Abel EL. Marijuana and memory: acquisition or retrieval? *Science* 1971; 173: 1038–41.
- Aboud ME, Martin BR. Neurobiology of marijuana abuse. [Review]. *Trends Pharmacol Sci* 1992; 13: 201–6.
- Aceto MD, Scates SM, Lowe JA, et al. Dependence on delta 9-tetrahydrocannabinol: studies on precipitated and abrupt withdrawal. *J Pharmacol Exp Ther* 1996; 278: 1290–5.
- Aceto MD, Scates SM, Martin BR. Spontaneous and precipitated withdrawal with a synthetic cannabinoid, WIN 55212-2. *Eur J Pharmacol* 2001; 416: 75–81.
- Adams IB, Martin BR. Cannabis: pharmacology and toxicology in animals and humans. [Review]. *Addiction* 1996; 91: 1585–14.
- Alger BE, Pitler TA. Retrograde signaling at GABA<sub>A</sub>-receptor synapses in the mammalian CNS. [Review]. *Trends Neurosci* 1995; 18: 333–40.
- American Psychiatric Association. Diagnostic and statistical manual of mental disorders. DSM-IV. 4th ed. Washington (DC): American Psychiatric Association; 1994.
- Andreasson S, Allebeck P, Engstrom A, et al. Cannabis and schizophrenia. A longitudinal study of Swedish conscripts. *Lancet* 1987; 2: 1483–5.
- Andreasson S, Allebeck P, Rydberg U. Schizophrenia in users and nonusers of cannabis. *Acta Psychiatr Scand* 1989; 79: 505–10.
- Anthony JC, Warner LA, Kessler RC. Comparative epidemiology of dependence on tobacco, alcohol, controlled substances and inhalants. Basic findings from the National Comorbidity Survey. *Exp Clin Psychopharmacol* 1994; 2: 244–68.
- Arseneault L, Cannon M, Poulton R, et al. Cannabis use in adolescence and risk for adult psychosis: longitudinal prospective study. *BMJ* 2002; 325: 1212–3.
- Atha MJ, Blanchard S. Regular users. Self-reported drug consumption patterns and attitudes towards drugs among 1333 regular cannabis users. Wigan: Independent Drug Monitoring Unit; 1997.
- Baker D, Pryce G, Croxford JL, et al. Cannabinoids control spasticity and tremor in a multiple sclerosis model. *Nature* 2000; 404: 84–7.
- Beal JA, Olson R, Laubenstein L, et al. Dronabinol as a treatment for anorexia associated with weight loss in patients with AIDS. *J Pain Symptom Manage* 1995; 10: 89–97.
- Bisogno T, Berrendero F, Ambrosino G, et al. Brain regional distribution of endocannabinoids: implications for their biosynthesis and biological function. *Biochem Biophys Res Commun* 1999; 256: 377–80.
- Block RI, O'Leary DS, Ehrhardt JC, et al. Effects of frequent marijuana use on brain tissue volume and composition. *Neuroreport* 2000; 11: 491–6.
- Bohme GA, Laville M, Ledent C, et al. Enhanced long-term potentiation in mice lacking cannabinoid CB<sub>1</sub> receptors. *Neuroscience* 2000; 95: 5–7.
- Bowman M, Pihl RO. Cannabis: psychological effects of chronic heavy use. A controlled study of intellectual functioning in chronic users of high potency cannabis. *Psychopharmacologia* 1973; 29: 159–70.
- Breivogel CS, Childers SR. The functional neuroanatomy of brain cannabinoid receptors. [Review]. *Neurobiol Dis* 1998; 5: 417–31.
- Breivogel CS, Griffin G, Di Marzo V, et al. Evidence for a new G protein-coupled cannabinoid receptor in mouse brain. *Mol Pharmacol* 2001; 60: 155–63.
- British Medical Association. Therapeutic uses of cannabis. [Review]. Amsterdam: Harwood Academic; 1997.
- Budney AJ, Hughes JR, Moore BA, et al. Marijuana abstinence effects in marijuana smokers maintained in their home environment. *Arch Gen Psychiatry* 2001; 58: 917–24.
- Cadas H, di Tomaso E, Piomelli D. Occurrence and biosynthesis of endogenous cannabinoid precursors, N-arachidonoyl phosphatidylethanolamine, in rat brain. *J Neurosci* 1997; 17: 1226–42.
- Campbell FA, Tramer MR, Carroll D, et al. Are cannabinoids an effective and safe treatment option in the management of pain? A qualitative systematic review. [Review]. *BMJ* 2001; 323: 13–6.
- Caulfield MP, Brown DA. Cannabinoid receptor agonists inhibit Ca current in NG108-15 neuroblastoma cells via a pertussis toxin-sensitive mechanism. *Br J Pharmacol* 1992; 106: 231–2.
- Chan PC, Sills RC, Braun AG, et al. Toxicity and carcinogenicity of delta 9-tetrahydrocannabinol in Fischer rats and B6C3F1 mice. *Fundam Appl Toxicol* 1996; 30: 109–17.
- Chan GCK, Hinds TR, Impey S, et al. Hippocampal neurotoxicity of delta 9-tetrahydrocannabinol. *J Neurosci* 1998; 18: 5322–32.
- Colombo G, Agabio R, Diaz G, et al. Appetite suppression and weight loss after the cannabinoid antagonist SR141716. *Life Sci* 1998; 63: PL113–7.
- Compton DR, Aceto MD, Lowe J, et al. In vivo characterization of a specific cannabinoid receptor antagonist (SR141716A): inhibition of delta 9-tetrahydrocannabinol-induced responses and

- apparent agonist activity. *J Pharmacol Exp Ther* 1996; 277: 586–94.
- Consroe P, Musty R, Rein J, et al. The perceived effects of smoked cannabis on patients with multiple sclerosis. *Eur Neurol* 1996; 38: 44–8.
- Cravatt BF, Demarest K, Patricelli MP, et al. Supersensitivity to anandamide and enhanced endogenous cannabinoid signaling in mice lacking fatty acid amide hydrolase. *Proc Natl Acad Sci USA* 2001; 98: 9371–6.
- Darmani NA. Delta 9-tetrahydrocannabinol and synthetic cannabinoids prevent emesis produced by the cannabinoid CB<sub>1</sub> receptor antagonist/inverse agonist SR141716A. *Neuropsychopharmacology* 2001; 24: 198–203.
- Darmani NA. The potent emetogenic effects of the endocannabinoid, 2-AG (2-arachidonylglycerol) are blocked by delta 9-tetrahydrocannabinol and other cannabinoids. *J Pharmacol Exp Ther* 2002; 300: 34–42.
- Deadwyler SA, Hampson RE, Childers SR. Functional significance of cannabinoid receptors in brain. In: Pertwee RG, editor. *Cannabinoid receptors*. London: Academic Press; 1995. p. 206–31.
- DeSanty KP, Dar MS. Cannabinoid-induced motor incoordination through the cerebellar CB<sub>1</sub> receptor in mice. *Pharmacol Biochem Behav* 2001; 69: 251–9.
- Devane WA, Hanus L, Breuer A, et al. Isolation and structure of a brain constituent that binds to the cannabinoid receptor. *Science* 1992; 258: 1946–9.
- Diana M, Melis M, Muntoni AL, et al. Mesolimbic dopaminergic decline after cannabinoid withdrawal. *Proc Natl Acad Sci USA* 1998; 95: 10269–73.
- DiMarzo V, Fontana A, Cadas H, et al. Formation and inactivation of endogenous cannabinoid anandamide in central neurons. *Nature* 1994; 372: 686–91.
- DiMarzo V, Breivogel CS, Tao Q, et al. Levels, metabolism, and pharmacological activity of anandamide in CB<sub>1</sub> cannabinoid receptor knockout mice: evidence for non-CB<sub>1</sub>, non-CB<sub>2</sub> receptor-mediated actions of anandamide in mouse brain. *J Neurochem* 2000; 75: 2434–44.
- DiMarzo V, Goparaju SK, Wang L, et al. Leptin-regulated endocannabinoids are involved in maintaining food intake. *Nature* 2001a; 410: 822–5.
- DiMarzo V, Bisogno T, De Petrocellis L. Anandamide: some like it hot. [Review]. *Trends Pharmacol Sci* 2001b; 22: 346–9.
- Dixon WE. The pharmacology of cannabis indica. *BMJ* 1899; 2: 1354–7.
- Dornbush RL, Freedman AM, Fink M, editors. *Chronic cannabis use*. [Review]. *Ann NY Acad Sci* 1976; 282: 1–430.
- Downer E, Boland B, Fogarty M, et al. Delta 9-tetrahydrocannabinol induces the apoptotic pathway in cultured cortical neurones via activation of the CB<sub>1</sub> receptor. *Neuroreport* 2001; 12: 3973–8.
- D'Souza DC, Kosten TR. Cannabinoid antagonists. [Review]. *Arch Gen Psychiatry* 2001; 58: 330–1.
- Earleywine M. *Understanding marijuana*. [Review]. Oxford: Oxford University Press; 2002.
- Egertová M, Elphick MR. Localisation of cannabinoid receptors in the rat brain using antibodies to the intracellular C-terminal tail of CB<sub>1</sub>. *J Comp Neurol* 2000; 422: 159–71.
- Egertová M, Giang DK, Cravatt BF, et al. A new perspective on cannabinoid signalling: complementary localization of fatty acid amide hydrolase and the CB<sub>1</sub> receptor in rat brain. *Proc R Soc Lond B Biol Sci* 1998; 265: 2081–5.
- Elphick MR, Egertová M. The neurobiology and evolution of cannabinoid signalling. [Review]. *Philos Trans R Soc Lond B Biol Sci* 2001; 356: 381–408.
- Emrich HM, Leweke FM, Schneider U. Towards a cannabinoid hypothesis of schizophrenia: cognitive impairments due to dysregulation of the endogenous cannabinoid system. [Review]. *Pharmacol Biochem Behav* 1997; 56: 803–7.
- Felder CC, Glass M. Cannabinoid receptors and their endogenous agonists. [Review]. *Annu Rev Pharmacol Toxicol* 1998; 38: 179–200.
- Felder CC, Nielsen A, Briley EM, et al. Isolation and measurement of the endogenous cannabinoid receptor agonist, anandamide, in brain and peripheral tissues of human and rat. *FEBS Lett* 1996; 393: 231–5.
- Fergusson DM, Horwood LJ, Swain-Campbell NR. Cannabis dependence and psychotic symptoms in young people. *Psychol Med* 2003; 33: 15–21.
- Fox A, Kessingland A, Gentry C, et al. The role of central and peripheral cannabinoid 1 receptors in the antihyperalgesic activity of cannabinoids in a model of neuropathic pain. *Pain* 2001; 92: 91–100.
- French ED, Dillon K, Wu X. Cannabinoids excite dopamine neurons in the ventral tegmentum and substantia nigra. *Neuroreport* 1997; 8: 649–52.
- Fride E, Ginzburg Y, Breuer A, et al. Critical role of the endogenous cannabinoid system in mouse pup suckling and growth. *Eur J Pharmacol* 2001; 419: 207–14.
- Fuentes JA, Ruiz-Gayo M, Manzanares J, et al. Cannabinoids as potential new analgesics. *Life Sci* 1999; 65: 675–85.
- Galve-Roperh I, Sanchez C, Cortés ML, et al. Anti-tumoral action of cannabinoids: involvement of sustained ceramide accumulation and extracellular signal-regulated kinase activation. *Nat Med* 2000; 6: 313–9.
- Gill EW, Paton WDM, Pertwee RG. Preliminary experiments on the chemistry and pharmacology of cannabis. *Nature* 1970; 229: 134–6.
- Giuffrida A, Piomelli D. The endocannabinoid system: a physiological perspective on its role in psychomotor control. [Review]. *Chem Phys Lipids* 2000; 108: 151–8.
- Giuffrida A, Parsons LH, Kerr TM, et al. Dopamine activation of endogenous cannabinoid signaling in dorsal striatum. *Nat Neurosci* 1999; 2: 358–63.
- Giuffrida A, Désarnaud F, Piomelli D. Endogenous cannabinoid signaling and psychomotor disorders. *Prostaglandins Other Lipid Mediat* 2000; 61: 63–70.

- Giuffrida A, Beltramo M, Piomelli D. Mechanisms of endocannabinoid inactivation: biochemistry and pharmacology. [Review]. *J Pharmacol Exp Ther* 2001; 298: 7–14.
- Greenberg HS, Werness SAS, Pugh JE, et al. Short-term effects of smoking marijuana on balance in patients with multiple sclerosis and normal volunteers. *Clin Pharmacol Ther* 1994; 55: 324–8.
- Guzmán M, Sánchez C, Galve-Roperh I. Control of the cell survival/death decision by cannabinoids. [Review]. *J Mol Med* 2001; 78: 613–25.
- Hájos N, Katona I, Naiem SS, et al. Cannabinoids inhibit hippocampal GABAergic transmission and network oscillations. *Eur J Neurosci* 2000; 12: 3239–49.
- Hájos N, Ledent C, Freund TF. Novel cannabinoid-sensitive receptor mediates inhibition of glutamatergic synaptic transmission in the hippocampus. *Neuroscience* 2001; 106: 1–4.
- Hall W, Degenhardt L. Cannabis use and psychosis: a review of clinical and epidemiological evidence. *Aust NZ J Psychiatry* 2000; 34: 26–34.
- Hambrecht M, Hafner H. Cannabis, vulnerability, and the onset of schizophrenia: an epidemiological perspective. *Aust NZ J Psychiatry* 2000; 34: 468–75.
- Hampson RE, Deadwyler SA. Cannabinoids, hippocampal function and memory. [Review]. *Life Sci* 1999; 65: 715–23.
- Hampson RE, Deadwyler SA. Cannabinoids reveal the necessity of hippocampal neural encoding for short-term memory in rats. *J Neurosci* 2000; 20: 8932–42.
- Hampson AJ, Grimaldi M, Axelrod J, et al. Cannabidiol and (-)-delta 9-tetrahydrocannabinol are neuroprotective antioxidants. *Proc Natl Acad Sci USA* 1998; 95: 8268–73.
- Han CJ, Robinson JK. Cannabinoid modulation of time estimation in the rat. *Behav Neurosci* 2001; 115: 243–6.
- Hanuš L, Abu-Lafi S, Fride E, et al. 2-arachidonyl glyceryl ether, an endogenous agonist of the cannabinoid CB<sub>1</sub> receptor. *Proc Natl Acad Sci USA* 2001; 98: 3662–5.
- Harper JW, Heath RG, Myers WA. Effects of cannabis sativa on ultrastructure of the synapse in monkey brain. *J Neurosci Res* 1977; 3: 87–93.
- Heath RG, Fitzjarrell AT, Fontana CJ, et al. Cannabis sativa: effects on brain function and ultrastructure in rhesus monkeys. *Biol Psychiatry* 1980; 15: 657–90.
- Herkenham M, Lynn AB, Johnson MR, et al. Characterization and localization of cannabinoid receptors in rat brain: a quantitative in vitro autoradiographic study. *J Neurosci* 1991; 11: 563–83.
- Herzberg U, Eliav E, Bennett GJ, et al. The analgesic effects of R(+)-WIN55,212-2 mesylate, a high affinity cannabinoid agonist, in a rat model of neuropathic pain. *Neurosci Lett* 1997; 221: 157–60.
- Hicks RE, Gualtieri CT, Mayo JP Jr, Perez-Reyes M. Cannabis, atropine, and temporal information processing. *Neuropsychobiology* 1984; 12: 229–37.
- Hine B, Friedman E, Torrelío M, et al. Morphine-dependent rats: blockade of precipitated abstinence by tetrahydrocannabinol. *Science* 1975; 187: 443–5.
- Hoffman AF, Lupica CR. Mechanisms of cannabinoid inhibition of GABA<sub>A</sub> synaptic transmission in the hippocampus. *J Neurosci* 2000; 20: 2470–9.
- Hollister LE. Hunger and appetite after single doses of marijuana, alcohol, and dextroamphetamine. *Clin Pharmacol Ther* 1971; 12: 44–9.
- Hollister LE. Health aspects of cannabis. [Review]. *Pharmacol Rev* 1986; 38: 1–20.
- Hollister LE. Health aspects of cannabis: revisited. *Int J Neuropsychopharmacol* 1998; 1: 71–80.
- Howlett AC, Johnson MR, Melvin LS, et al. Nonclassical cannabinoid analgetics inhibit adenylate cyclase: development of a cannabinoid receptor model. *Mol Pharmacol* 1988; 33: 297–302.
- Huestis MA, Gorelick DA, Heishman SJ, et al. Blockade of effects of smoked marijuana by the CB<sub>1</sub>-selective cannabinoid receptor antagonist SR141716. *Arch Gen Psychiatry* 2001; 58: 322–8.
- Iversen LL. The science of marijuana. [Review]. Oxford: Oxford University Press; 2000.
- Iversen LL, Chapman V. Cannabinoids: a real prospect for pain relief? [Review]. *Curr Opin Pharmacol* 2002; 2: 50–5.
- Johns A. Psychiatric effects of cannabis. [Review]. *Br J Psychiatry* 2001; 178: 116–22.
- Jones RT. Marijuana: human effects. [Review] In: Iversen LL, Iversen SD, Snyder SH, editors. *Handbook of psychopharmacology*. Vol. 12. New York: Plenum Press; 1978. p. 373–412.
- Jones RT. Drug of abuse profile: cannabis. [Review]. *Clin Chem* 1987; 33 (11 Suppl): 72B–81B.
- Joy JE, Watson SJ, Benson JA, editors. *Marijuana and medicine, assessing the science base*. Washington (DC): National Academy Press; 1999.
- Katona I, Sperlagh B, Sik A, et al. Presynaptically located CB<sub>1</sub> cannabinoid receptors regulate GABA release from axon terminals of specific hippocampal interneurons. *J Neurosci* 1999; 19: 4544–58.
- Katona I, Sperlagh B, Maglóczy Z, et al. GABAergic interneurons are the targets of cannabinoid actions in the human hippocampus. *Neuroscience* 2000; 100: 797–804.
- Katona I, Rancz EA, Acsády L, et al. Distribution of CB<sub>1</sub> cannabinoid receptors in the amygdala and their role in the control of GABAergic transmission. *J Neurosci* 2001; 21: 9506–18.
- Kaymakçalan S, Ayhan IH, Tulunay FC. Naloxone-induced or postwithdrawal abstinence signs in delta 9-tetrahydrocannabinol-tolerant rats. *Psychopharmacology (Berl)* 1977; 55: 243–9.
- Koch JE. Delta 9-THC stimulates food intake in Lewis rats. Effects on chow, high-fat and sweet high-fat diets. *Pharmacol Biochem Behav* 2001; 68: 539–43.
- Kreitzer AC, Regehr WG. Retrograde inhibition of presynaptic calcium influx by endogenous cannabinoids at excitatory synapses onto Purkinje cells. *Neuron* 2001a; 29: 717–27.
- Kreitzer AC, Regehr WG. Cerebellar depolarization-induced



- suppression of inhibition is mediated by endogenous cannabinoids. *J Neurosci* 2001b; 21: RC174–9.
- Landfield PW, Cadwallader LB, Vinsant S. Quantitative changes in hippocampal structure following long-term exposure to delta 9-tetrahydrocannabinol: possible mediation by glucocorticoid systems. *Brain Res* 1988; 443: 47–62.
- Lawston J, Borella A, Robinson JK, et al. Changes in hippocampal morphology following chronic treatment with the synthetic cannabinoid WIN 55,212-2. *Brain Res* 2000; 877: 407–10.
- Ledent C, Valverde O, Cossu G, et al. Unresponsiveness to cannabinoids and reduced addictive effects of opiates in CB<sub>1</sub> receptor knockout mice. *Science* 1999; 283: 401–4.
- Lenz RA, Wagner JJ, Alger BE. N- and L-type calcium channel involvement in depolarization-induced suppression of inhibition in rat hippocampal CA1 cells. *J Physiol* 1998; 512: 61–73.
- Lepore M, Vorel SR, Lowinson J, et al. Conditioned place preference induced by delta 9-tetrahydrocannabinol: comparison with cocaine, morphine and food reward. *Life Sci* 1995; 56: 2073–80.
- Lichtman AH, Martin BR. Delta 9-tetrahydrocannabinol impairs spatial memory through a cannabinoid receptor mechanism. *Psychopharmacology (Berl)* 1996; 126: 125–31.
- Lichtman AH, Fisher J, Martin BR. Precipitated cannabinoid withdrawal is reversed by delta 9-tetrahydrocannabinol or clonidine. *Pharmacol Biochem Behav* 2001a; 69: 181–8.
- Lichtman AH, Sheikh SM, Loh HH, et al. Opioid and cannabinoid modulation of precipitated withdrawal in delta 9-tetrahydrocannabinol and morphine-dependent mice. *J Pharmacol Exp Ther* 2001b; 298: 1007–14.
- Linzen DH, Dingemans PM, Lenior ME. Cannabis abuse and the course of recent-onset schizophrenic disorders. *Arch Gen Psychiatry* 1994; 51: 273–9.
- MacKie K, Hille B. Cannabinoids inhibit N-type calcium channels in neuroblastoma-glioma cells. *Proc Natl Acad Sci USA* 1992; 89: 3825–9.
- Maejima T, Hashimoto K, Yoshida T, et al. Presynaptic inhibition caused by retrograde signal from metabotropic glutamate to cannabinoid receptors. *Neuron* 2001; 31: 463–75.
- Mallet PE, Beninger RJ. The cannabinoid CB<sub>1</sub> receptor antagonist SR141716A attenuates the memory impairment produced by delta 9-tetrahydrocannabinol or anandamide. *Psychopharmacology (Berl)* 1998; 140: 11–9.
- Manno JE, Kiplinger GF, Haine SE, et al. Comparative effects of smoking marijuana or placebo on human motor and mental performance. *Clin Pharmacol Ther* 1970; 11: 808–15.
- Manzanas J, Corchero J, Romero J, et al. Pharmacological and biochemical interactions between opioids and cannabinoids. *Trends Pharmacol Sci* 1999; 20: 287–94.
- Marsicano G, Lutz B. Expression of the cannabinoid receptor CB<sub>1</sub> in distinct neuronal subpopulations in the adult mouse forebrain. *Eur J Neurosci* 1999; 11: 4213–4225.
- Mathers DC, Ghodse AH. Cannabis and psychotic illness. *Br J Psychiatry* 1992; 161: 648–53.
- Mathew RJ, Wilson WH, Coleman RE, et al. Marijuana intoxication and brain activation in marijuana smokers. *Life Sci* 1997; 60: 2075–89.
- Mathew RJ, Wilson WH, Turkington TG, et al. Cerebellar activity and disturbed time sense after THC. *Brain Res* 1998; 797: 183–9.
- Matsuda LA, Lolait SJ, Brownstein MJ, et al. Structure of a cannabinoid receptor and functional expression of the cloned cDNA. *Nature* 1990; 346: 561–4.
- Mattes RD, Engelman K, Shaw LM, et al. Cannabinoids and appetite stimulation. [Review]. *Pharmacol Biochem Behav* 1994; 49: 187–95.
- Mechoulam R. Marijuana chemistry. [Review]. *Science* 1970; 168: 1159–66.
- Mechoulam R, Fride E. Physiology. A hunger for cannabinoids. [Review]. *Nature* 2001; 410: 763, 765.
- Mechoulam R, Ben-Shabat S, Hanuš L, et al. Identification of an endogenous 2-monoglyceride, present in canine gut, that binds to cannabinoid receptors. *Biochem Pharmacol* 1995; 50: 83–90.
- Mechoulam R, Fride E, Hanus L, et al. Anandamide may mediate sleep induction. [Review]. *Nature* 1997; 389: 25–6.
- Mendelson JH, Babor TF, Kuehnle JC, et al. Behavioral and biologic aspects of marijuana use. [Review]. *Ann NY Acad Sci* 1976; 282: 186–210.
- Meng ID, Manning BH, Martin WJ, et al. An analgesia circuit activated by cannabinoids. *Nature* 1998; 395: 381–3.
- Miller LL, Branconier RJ. Cannabis: effects on memory and the cholinergic limbic system. *Psychol Bull* 1983; 93: 441–56.
- Misner DL, Sullivan JM. Mechanism of cannabinoid effects on long-term potentiation and depression in hippocampal CA1 neurons. *J Neurosci* 1999; 19: 6795–805.
- Morrall AR, McCaffrey DF, Paddock SM. Reassessing the marijuana gateway effect. *Addiction* 2002; 97: 1493–504.
- Munro S, Thomas KL, Abu-Shaar M. Molecular characterization of a peripheral receptor for cannabinoids. *Nature* 1993; 365: 61–5.
- Nagayama T, Sinor AD, Simon RP, et al. Cannabinoids and neuroprotection in global and focal cerebral ischemia and in neuronal cultures. *J Neurosci* 1999; 19: 2987–95.
- Nakamura-Palacios EM, Winsauer PJ, Moerschbaecher JM. Effects of the cannabinoid ligand SR141716A alone or in combination with delta-9-tetrahydrocannabinol or scopolamine on learning in squirrel monkeys. *Behav Pharmacol* 2000; 11: 377–86.
- Negrete JC, Knapp WP, Douglas DE, et al. Cannabis affects the severity of schizophrenic symptoms: results of a clinical survey. *Psychol Med* 1986; 16: 515–20.
- Ohno-Shosaku T, Maejima T, Kano M. Endogenous cannabinoids mediate retrograde signals from depolarized postsynaptic neurons to presynaptic terminals. *Neuron* 2001; 29: 729–38.
- Panikashvili D, Simeonidou C, Ben-Shabat S, et al. An endogenous cannabinoid (2-AG) is neuroprotective after brain injury. *Nature* 2001; 413: 527–31.

- Patel S, Hillard CJ. Cannabinoid CB<sub>1</sub> receptor agonists produce cerebellar dysfunction in mice. *J Pharmacol Exp Ther* 2001; 297: 629–37.
- Patton GC, Coffey C, Carlin JB, et al. Cannabis use and mental health in young people: cohort study. *BMJ* 2002; 325: 1195–8.
- Peralta V, Cuesta MJ. Influence of cannabis abuse on schizophrenic psychopathology. *Acta Psychiatr Scand* 1992; 85: 127–30.
- Pertwee RG. Tolerance to and dependence on psychotropic cannabinoids. [Review]. In: Pratt J, editor. *The biological basis of drug tolerance and dependence*. London: Academic Press; 1991. p. 232–65.
- Pertwee RG. Pharmacology of cannabinoid receptor ligands. [Review]. *Curr Med Chem* 1999; 6: 635–64.
- Pertwee RG. Cannabinoid receptors and pain. [Review]. *Prog Neurobiol* 2001; 63: 569–611.
- Pettit DAD, Harrison MP, Olson JM, et al. Immunohistochemical localization of the neural cannabinoid receptor in rat brain. *J Neurosci Res* 1998; 51: 391–402.
- Piomelli D, Beltramo M, Giuffrida A, et al. Endogenous cannabinoid signaling. [Review]. *Neurobiol Dis* 1998; 5: 462–73.
- Piomelli D, Giuffrida A, Calignano A, et al. The endocannabinoid system as a target for therapeutic drugs. [Review]. *Trends Pharmacol Sci* 2000; 21: 218–24.
- Pitler TA, Alger BE. Postsynaptic spike firing reduces synaptic GABA<sub>A</sub> responses in hippocampal pyramidal cells. *J Neurosci* 1992; 12: 4122–32.
- Pitler TA, Alger BE. Depolarization-induced suppression of GABAergic inhibition in rat hippocampal pyramidal cells: G protein involvement in a presynaptic mechanism. *Neuron* 1994; 13: 1447–55.
- Pontieri FE, Monnazzi P, Scontrini A, et al. Behavioral sensitization to heroin by cannabinoid pretreatment in the rat. *Eur J Pharmacol* 2001; 421: R1–3.
- Pope HG Jr, Gruber AJ, Hudson JI, et al. Neuropsychological performance in long-term cannabis users. *Arch Gen Psychiatry* 2001; 58: 909–15.
- Reibaud M, Obinu MC, Ledent C, et al. Enhancement of memory in cannabinoid CB<sub>1</sub> receptor knock-out mice. *Eur J Pharmacol* 1999; 379: R1–2.
- Rinaldi-Carmona M, Barth F, Heaulme M, et al. SR141716A, a potent and selective antagonist of the brain cannabinoid receptor. *FEBS Lett* 1994; 350: 240–4.
- Robson P. Therapeutic aspects of cannabis and cannabinoids. [Review]. *Br J Psychiatry* 2001; 178: 107–15.
- RodríguezdeFonseca F, Carrera MR, Navarro M, et al. Activation of corticotropin-releasing factor in the limbic system during cannabinoid withdrawal. *Science* 1997; 276: 2050–4.
- RodríguezdeFonseca F, Del Arco I, Martín-Calderón JL, et al. Role of the endogenous cannabinoid system in the regulation of motor activity. [Review]. *Neurobiol Dis* 1998; 5: 483–501.
- Roth SH. Stereospecific presynaptic inhibitory effect of delta-9-tetrahydrocannabinol on cholinergic transmission in the myenteric plexus of the guinea pig. *Can J Physiol Pharmacol* 1978; 56: 968–75.
- Rubino T, Patrini G, Massi P, et al. Cannabinoid-precipitated withdrawal: a time-course study of the behavioral aspect and its correlation with cannabinoid receptors and G protein expression. *J Pharmacol Exp Ther* 1998; 285: 813–9.
- Sánchez C, Galve-Roperh I, Canova C, et al. Delta 9-tetrahydrocannabinol induces apoptosis in C6 glioma cells. *FEBS Lett* 1998; 436: 6–10.
- Santucci V, Storme JJ, Soubrie P, et al. Arousal-enhancing properties of the CB<sub>1</sub> cannabinoid receptor antagonist SR 141716A in rats as assessed by electroencephalographic spectral and sleep-waking cycle analysis. *Life Sci* 1996; 58: PL103–10.
- Sañudo-Peña MC, Tsou K, Walker JM. Motor actions of cannabinoids in the basal ganglia output nuclei. *Life Sci* 1999; 65: 703–13.
- Sañudo-Peña MC, Romero J, Seale GE, et al. Activational role of cannabinoids on movement. *Eur J Pharmacol* 2000; 391: 269–74.
- Satz P, Fletcher JM, Sutker LS. Neuropsychologic, intellectual, and personality correlates of chronic marijuana use in native Costa Ricans. *Ann NY Acad Sci* 1976; 282: 266–306.
- Scallet AC. Neurotoxicology of cannabis and THC: a review of chronic exposure studies in animals. [Review]. *Pharmacol Biochem Behav* 1991; 40: 671–6.
- Scallet AC, Uemura E, Andrews A, et al. Morphometric studies of the rat hippocampus following chronic delta-9-tetrahydrocannabinol (THC). *Brain Res* 1987; 436: 193–8.
- Schlicker E, Kathmann M. Modulation of transmitter release via presynaptic cannabinoid receptors. [Review]. *Trends Pharmacol Sci* 2001; 22: 565–72.
- Shen M, Thayer SA. Cannabinoid receptor agonists protect cultured rat hippocampal neurons from excitotoxicity. *Mol Pharmacol* 1998; 54: 459–62.
- Shen M, Piser TM, Seybold VS, et al. Cannabinoid receptor agonists inhibit glutamatergic synaptic transmission in rat hippocampal cultures. *J Neurosci* 1996; 16: 4322–34.
- Sinor AD, Irvin SM, Greenberg DA. Endocannabinoids protect cerebral cortical neurons from in vitro ischemia in rats. *Neurosci Lett* 2000; 278: 157–60.
- Skosnik PD, Spatz-Glenn L, Park S. Cannabis use is associated with schizotypy and attentional disinhibition. *Schizophr Res* 2001; 48: 83–92.
- Smith FL, Cichewicz D, Martin ZL, et al. The enhancement of morphine antinociception in mice by delta-9-tetrahydrocannabinol. *Pharmacol Biochem Behav* 1998; 60: 559–66.
- Solowij N. Cannabis and cognitive functioning. [Review]. Cambridge: Cambridge University Press; 1998.
- Stella N, Piomelli D. Receptor-dependent formation of endogenous cannabinoids in cortical neurons. *Eur J Pharmacol* 2001; 425: 189–96.
- Stella N, Schweitzer P, Piomelli D. A second endogenous

- cannabinoid that modulates long-term potentiation. *Nature* 1997; 388: 773–8.
- Stiglick A, Kalant H. Residual effects of chronic cannabis treatment on behavior in mature rats. *Psychopharmacology (Berl)* 1985; 85: 436–9.
- Sugiura T, Kondo S, Sukagawa A, et al. 2-Arachidonoylglycerol: a possible endogenous cannabinoid receptor ligand in brain. *Biochem Biophys Res Commun* 1995; 215: 89–97.
- Swift W, Hall W, Teesson M. Cannabis use and dependence among Australian adults: results from the National Survey of Mental Health and Wellbeing. *Addiction* 2001; 96: 737–48.
- Tanda G, Pontieri FE, Di Chiara G. Cannabinoid and heroin activation of mesolimbic dopamine transmission by a common  $\mu_1$  opioid receptor mechanism. *Science* 1997; 276: 2048–50.
- Tanda G, Munzar P, Goldberg SR. Self-administration behavior is maintained by the psychoactive ingredient of marijuana in squirrel monkeys. *Nat Neurosci* 2000; 3: 1073–4.
- Terranova JP, Michaud JC, Le Fur G, et al. Inhibition of long-term potentiation in rat hippocampal slices by anandamide and WIN55212-2: reversal by SR141716-A, a selective antagonist of CB<sub>1</sub> cannabinoid receptors. *Naunyn Schmiedeberg's Arch Pharmacol* 1995; 352: 576–9.
- Terranova JP, Storme JJ, Lafon N, et al. Improvement of memory in rodents by the selective CB<sub>1</sub> cannabinoid receptor antagonist, SR141716. *Psychopharmacology (Berl)* 1996; 126: 165–72.
- Thomas H. Psychiatric symptoms in cannabis users. [Review]. *Br J Psychiatry* 1993; 163: 141–9.
- Thornicroft G. Cannabis and psychosis. Is there epidemiological evidence for an association? *Br J Psychiatry* 1990; 157: 25–33.
- Tramèr MR, Carroll D, Campbell FA, et al. Cannabinoids for control of chemotherapy induced nausea and vomiting: quantitative systematic review. [Review]. *BMJ* 2001; 323: 16–21.
- US Department of Health and Human Services. US National Household Survey of Drug Abuse. 1999. Washington DC.
- Valverde O, Maldonado R, Valjent E, et al. Cannabinoid withdrawal syndrome is reduced in pre-proenkephalin knock-out mice. *J Neurosci* 2000; 15: 9284–9.
- Valverde O, Noble F, Beslot F, et al. Delta 9-tetrahydrocannabinol releases and facilitates the effects of endogenous enkephalins: reduction in morphine withdrawal syndrome without change in rewarding effect. *Eur J Neurosci* 2001; 13: 1816–24.
- VanderStelt M, Veldhuis WB, Bär PR, et al. Neuroprotection by delta-9-tetrahydrocannabinol, the main active compound in marijuana, against ouabain-induced in vivo excitotoxicity. *J Neurosci* 2001; 21: 6475–9.
- Varma N, Carlson GC, Ledent C, et al. Metabotropic glutamate receptors drive the endocannabinoid system in hippocampus. *J Neurosci* 2001; 21: RC188–93.
- Verdoux H, Gindre C, Sorbara F, et al. Effects of cannabis and psychosis vulnerability in daily life: an experience sampling test study. *Psychol Med* 2003; 33: 23–32.
- Vincent BJ, McQuiston DJ, Einhorn LH, et al. Review of cannabinoids and their antiemetic effectiveness. [Review]. *Drugs* 1983; 25 Suppl 1: 52–62.
- Walker JM, Hohmann AG, Martin WJ, et al. The neurobiology of cannabinoid analgesia. [Review]. *Life Sci* 1999; 65: 665–73.
- Welch SP, Stevens DL. Antinociceptive activity of intrathecally administered cannabinoids alone, and in combination with morphine, in mice. *J Pharmacol Exp Ther* 1992; 262: 10–18.
- Williams CM, Kirkham TC. Anandamide induces overeating: mediation by central cannabinoid (CB<sub>1</sub>) receptors. *Psychopharmacology (Berl)* 1999; 143: 315–7.
- Williams JH, Wellman NA, Rawlins JNP. Cannabis use correlates with schizotypy in healthy people. *Addiction* 1996; 91: 869–77.
- Wilson RI, Nicoll RA. Endogenous cannabinoids mediate retrograde signalling at hippocampal synapses. *Nature* 2001; 410: 588–92.
- Yamaguchi T, Hagiwara Y, Tanaka H, et al. Endogenous cannabinoid, 2-arachidonoylglycerol, attenuates naloxone-precipitated withdrawal signs in morphine-dependent mice. *Brain Res* 2001; 909: 121–6.
- Zammit S, Allebeck P, Andreasson S, et al. Self reported cannabis use as a risk factor for schizophrenia in Swedish conscripts of 1969: historical cohort study. *BMJ* 2002; 325: 1199.
- Zimmer L, Morgan JP. Marijuana myths, marijuana facts. [Review]. New York: Lindesmith Center; 1997.
- Zimmer A, Zimmer AM, Hohmann AG, et al. Increased mortality, hypoactivity, and hypoalgesia in cannabinoid CB<sub>1</sub> receptor knockout mice. *Proc Natl Acad Sci USA* 1999; 96: 5780–5.

Received April 15, 2002. Revised January 13, 2003

Accepted January 15, 2003